

EASYVMS

User Manual

V2.0.0

1, Instruction

1.1 Instruction

EASYVMS provides preview/playback/video services for small and medium network of IP camera Manager. This manual may contain technically Incompletes, and its contents will be regularly updated without notice; the updated contents will be added in the new version of the user manual. We will improve or update the products described in this manual at any time.

Specification

Support P2P device addition and management

Simplify for CMS system, convenient to operate, Without AD.

centralized manage user, Error management, system maintenance and TOP navigation

□ Provide streaming media distribution function

Provide streaming media storage and playback, monitor playback connection status, and provide relevant status notification

Operation System environment

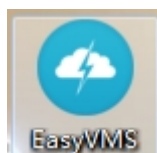
OS: Microsoft Windows XP sp1 or above

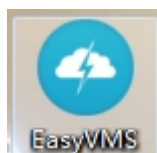
CPU: Intel Pentium IV 2.4 GHz or above

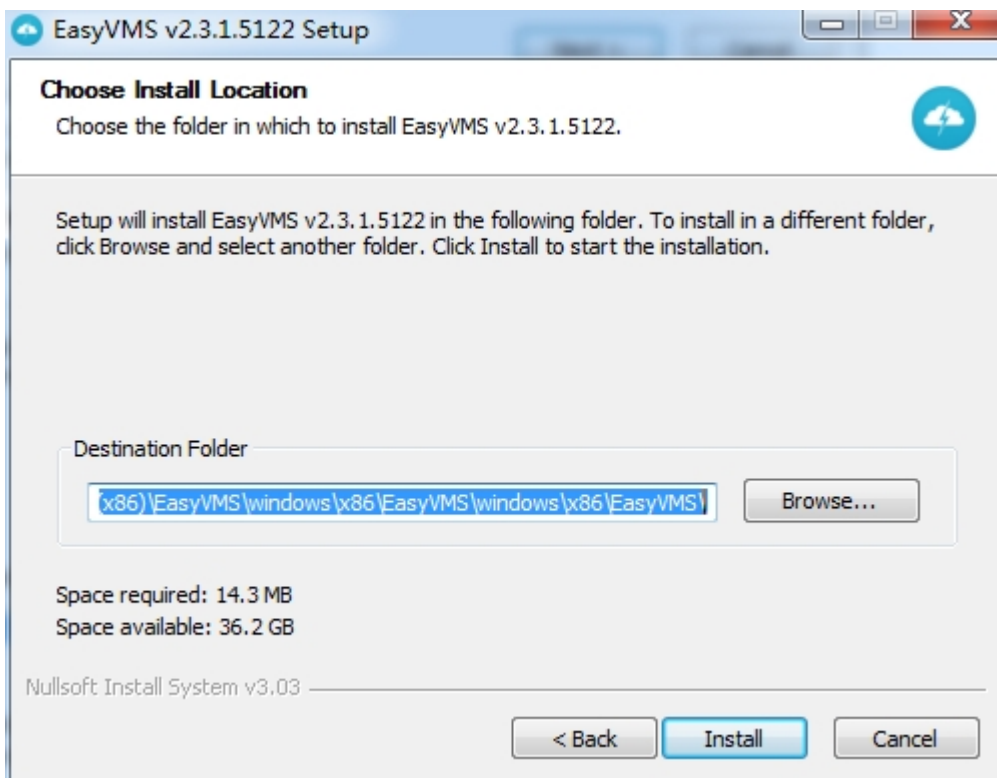
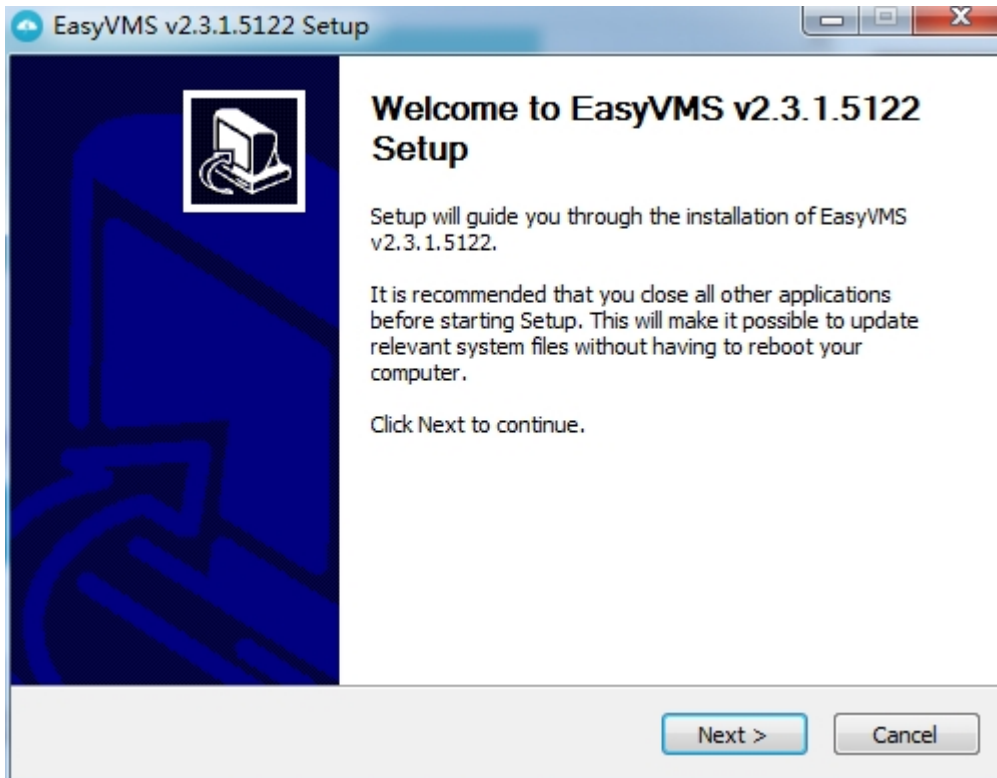
Memory: 1G memory or above

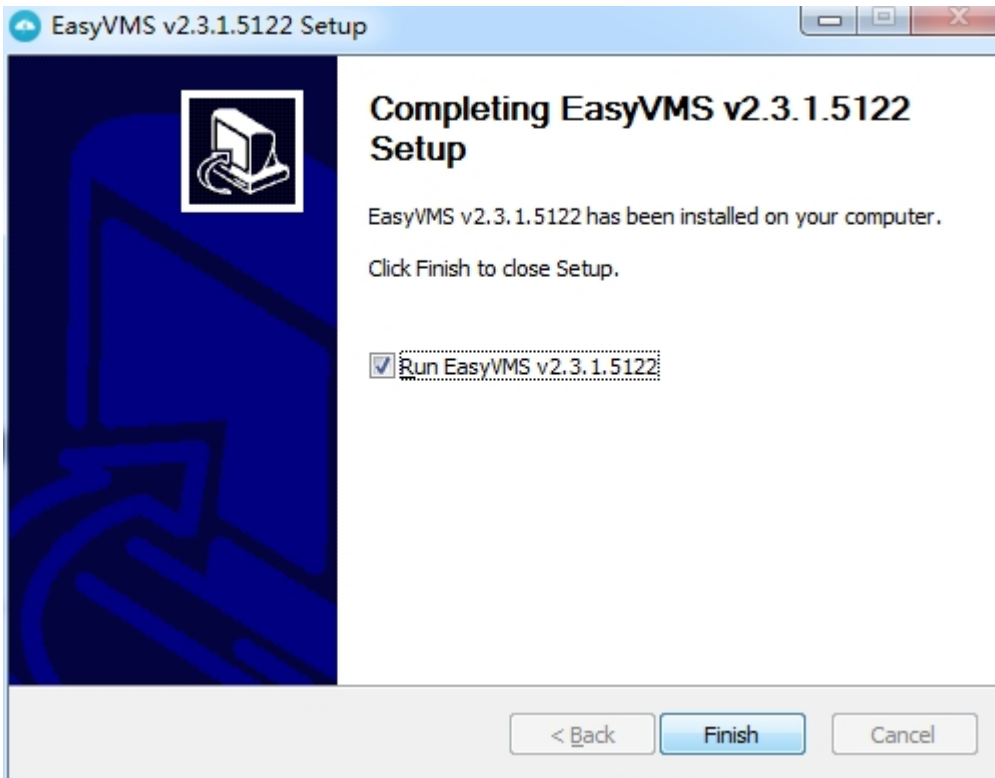
2,Installation and OperationInstallation

2.1.EASYVMS installation

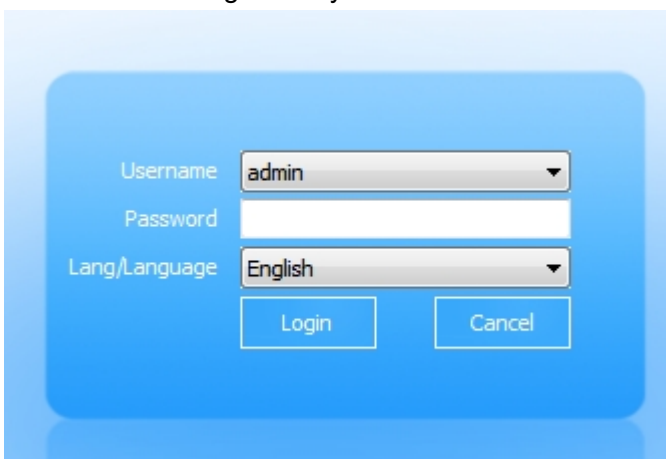


Search the file in the software directory  , Running the software, it will step for Installation.





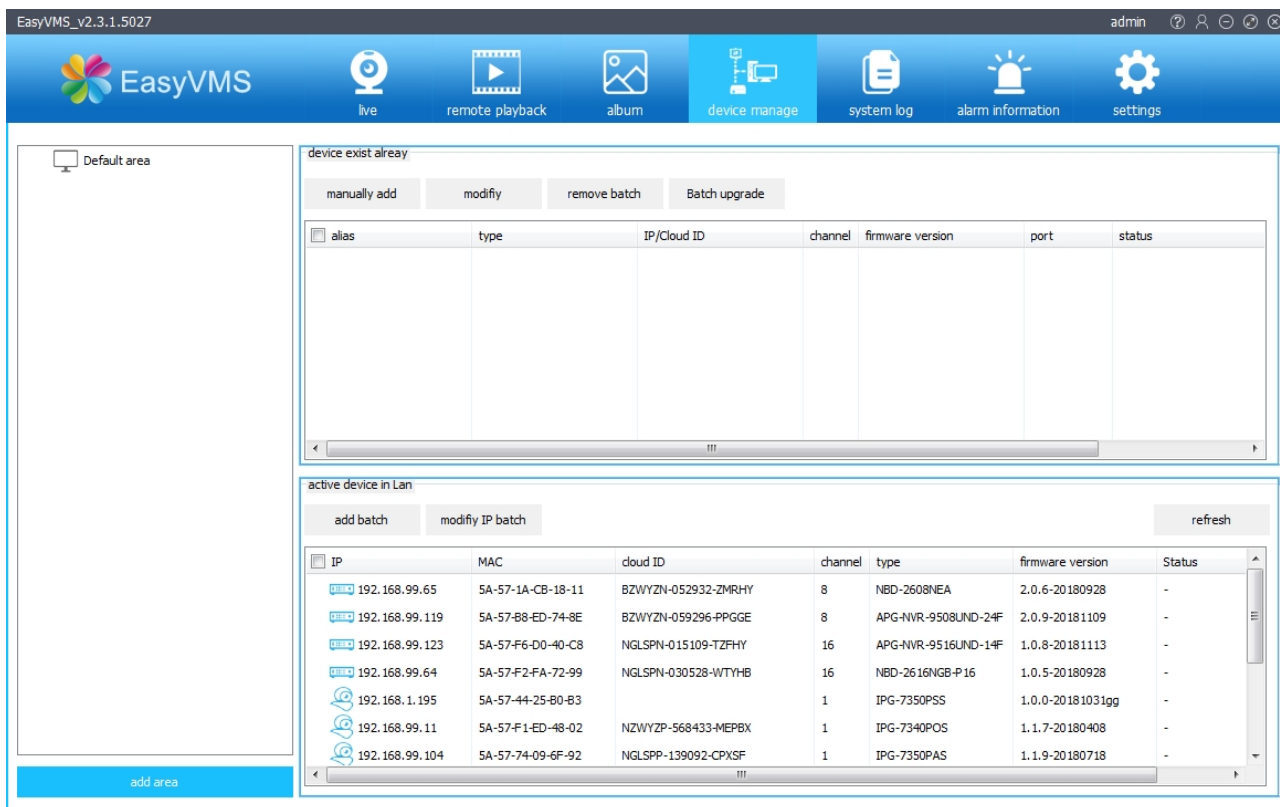
After finished the installation, press the program of ICON , then you can running the EASYVMS and login the system.



Username is admin, Password is empty
Interface and Function

2.2. Interface for introduce

Running the CMS software EASYvms, you can see the follow picture.



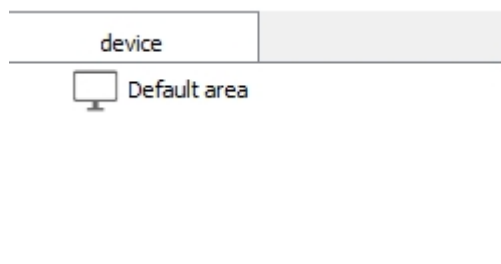
there have Live, Remote, Playback, Album, Device Manage, System Log, Alarm Information, Setting main functions, press the button, it will change to Sub functions. for the left area is device navigation, for the right area is video screen, for the upper right corner, it is help, logout, minimize, maximize, close buttons

2.3 Device Manage

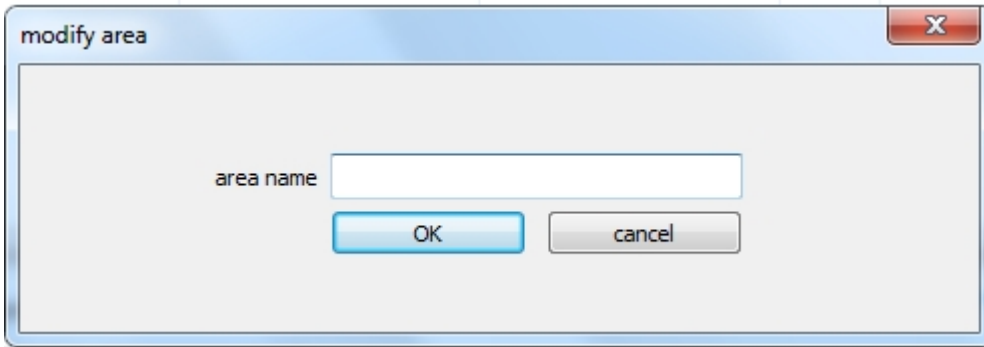
Click the device manage button to enter the device ID manage page, there have add, modify, delete operations for area and device.

2.3.1 Area Configuration

Manage device in area, Add area



Also can press right key for custom new area.



2.3.2 Device Add, Modify, Delete

Click the Refresh button for search device.

device exist already

manually add modify remove batch Batch upgrade

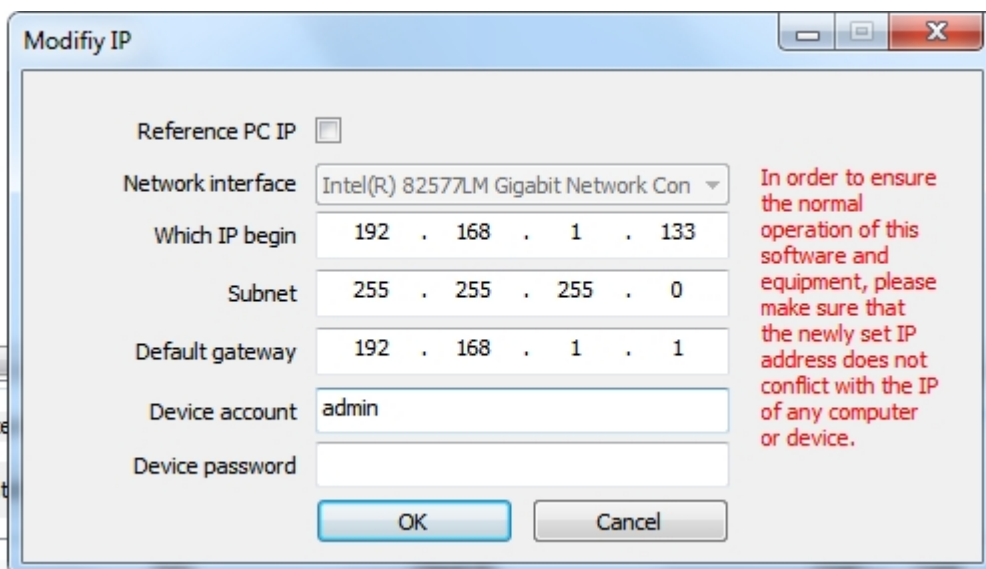
checkbox	alias	type	IP/Cloud ID	channel	firmware version	port	status

active device in Lan

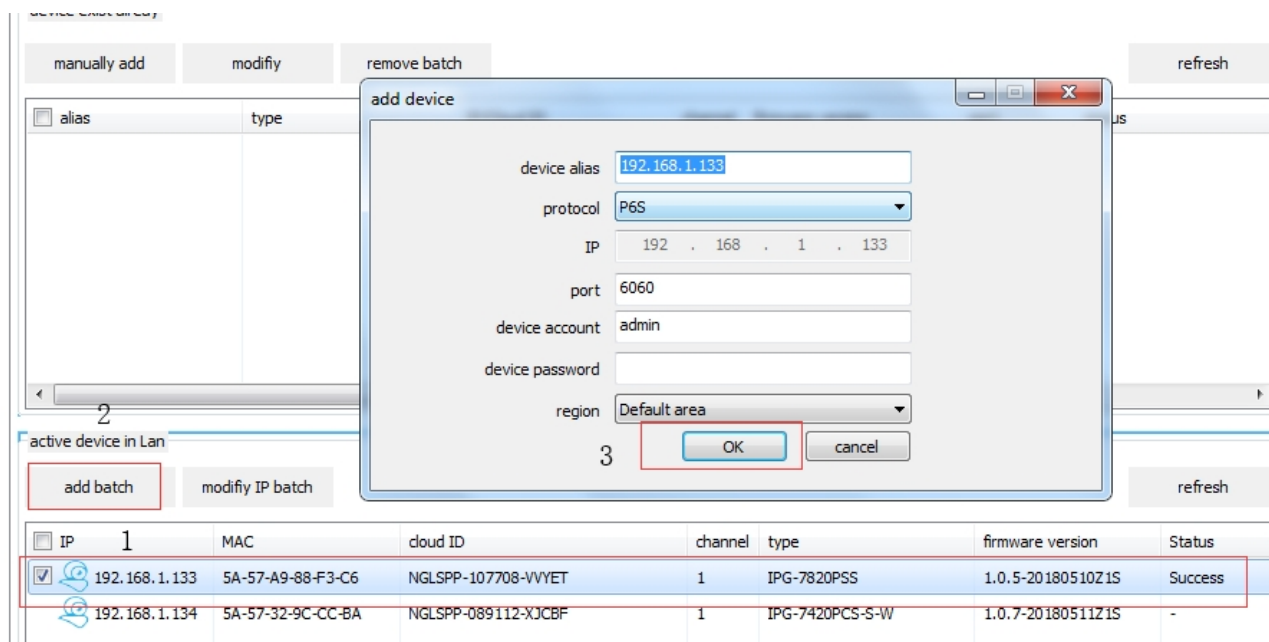
add batch modify IP batch refresh

checkbox	IP	MAC	cloud ID	channel	type	firmware version	Status
	192.168.99.65	5A-57-1A-CB-18-11	BZWYZN-052932-ZMRHY	8	NBD-2608NEA	2.0.6-20180928	-
	192.168.99.119	5A-57-88-ED-74-8E	BZWYZN-059296-PPGGE	8	APG-NVR-9508UND-24F	2.0.9-20181109	-
	192.168.99.123	5A-57-F6-D0-40-C8	NGLSPN-015109-TZFHY	16	APG-NVR-9516UND-14F	1.0.8-20181113	-
	192.168.99.64	5A-57-F2-FA-72-99	NGLSPN-030528-WTYHB	16	NBD-2616NGB-P16	1.0.5-20180928	-
	192.168.1.195	5A-57-44-25-80-B3		1	IPG-7350PSS	1.0.0-20181031gg	-
	192.168.99.11	5A-57-F1-ED-48-02	NZWYZP-568433-MEPBX	1	IPG-7340POS	1.1.7-20180408	-
	192.168.99.104	5A-57-74-09-6F-92	NGLSPP-139092-CPXSF	1	IPG-7350PAS	1.1.9-20180718	-

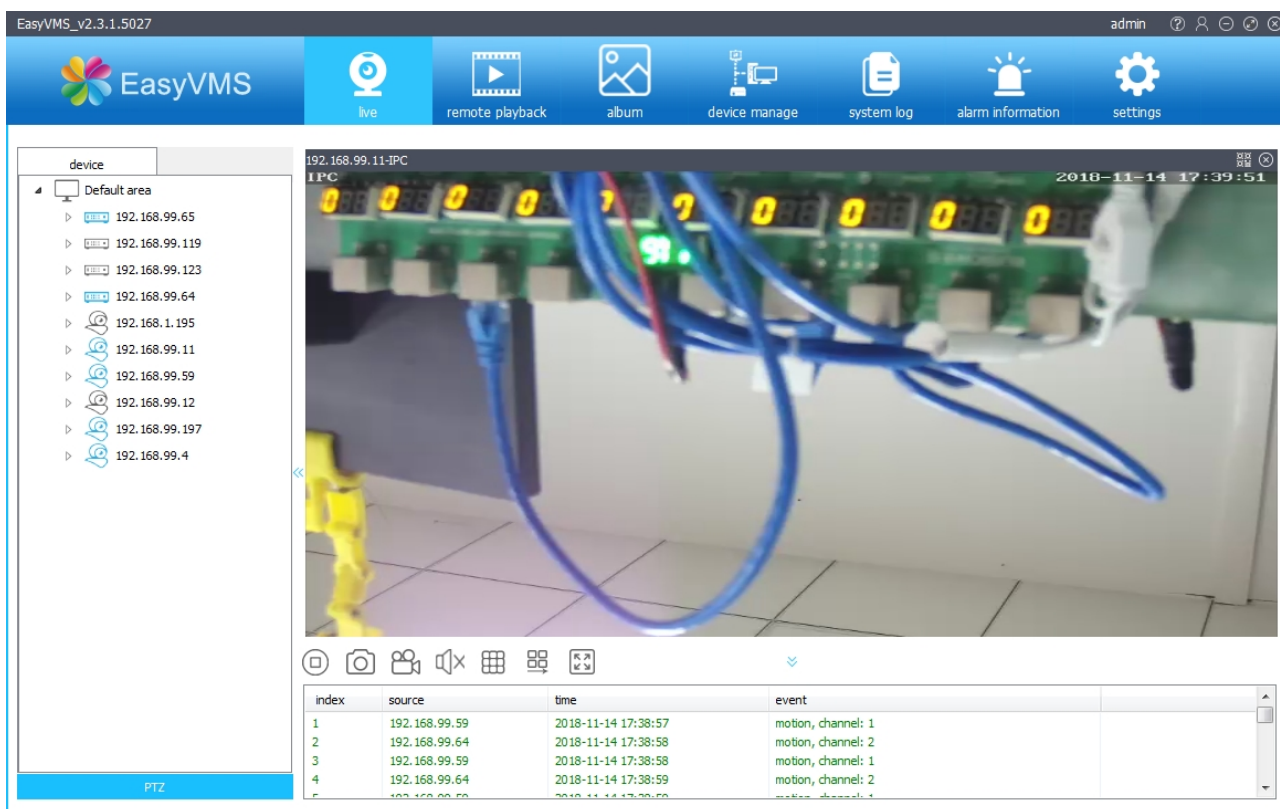
Click the camera ip address and show “modify IP” dialog box for change the new IP address of camera.



If you want easy, you can choose “Reference PC IP”, so it will default the ipaddress for your camera. You also can manual fill the IP address on it, but username: admin, password: empty (no password) After press “OK” button, save address and refresh IP.

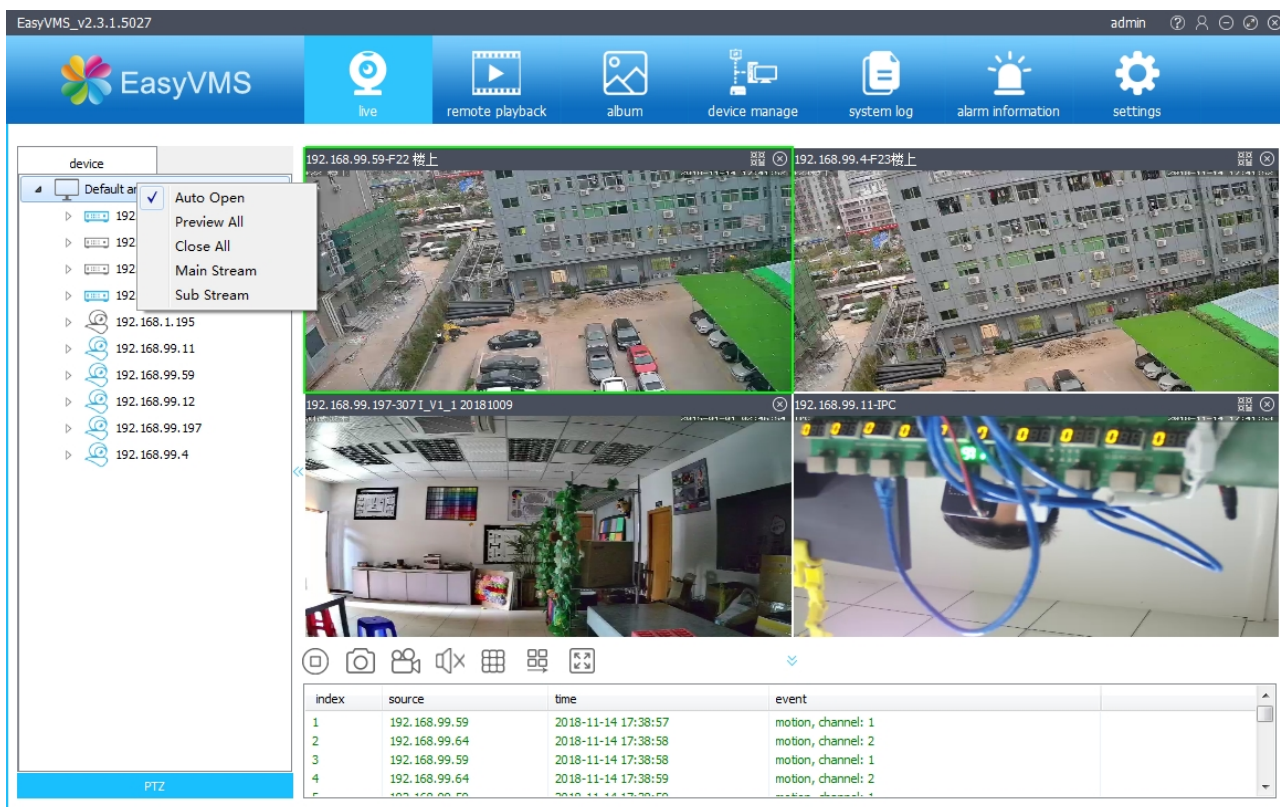


Press Live function, you see the preview the interface



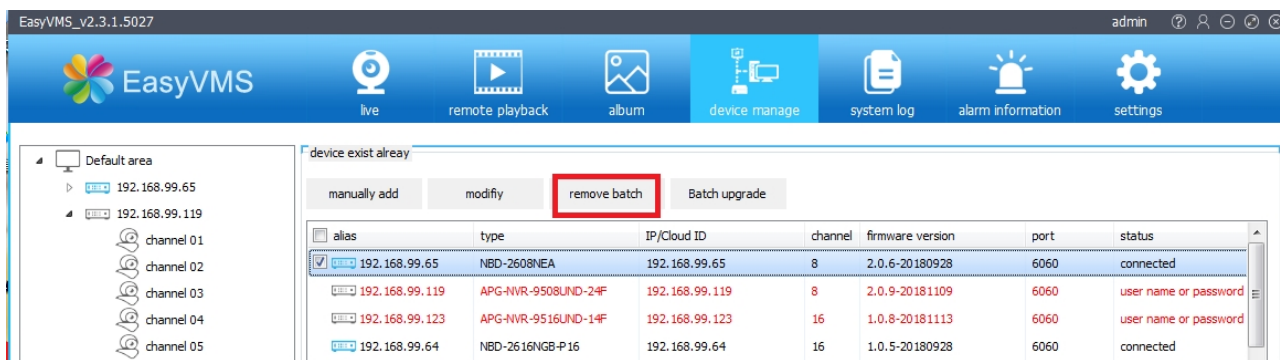
Double click the left camera ip address, you can see the video on the right screen.

If you want add more device, you can choose Device"> Default area(right key) Choose "Auto Open"/"Open by Area" Open all channels



Delete Device:

On the device listing, you can choose one or more device for delete, just press Remove batch.

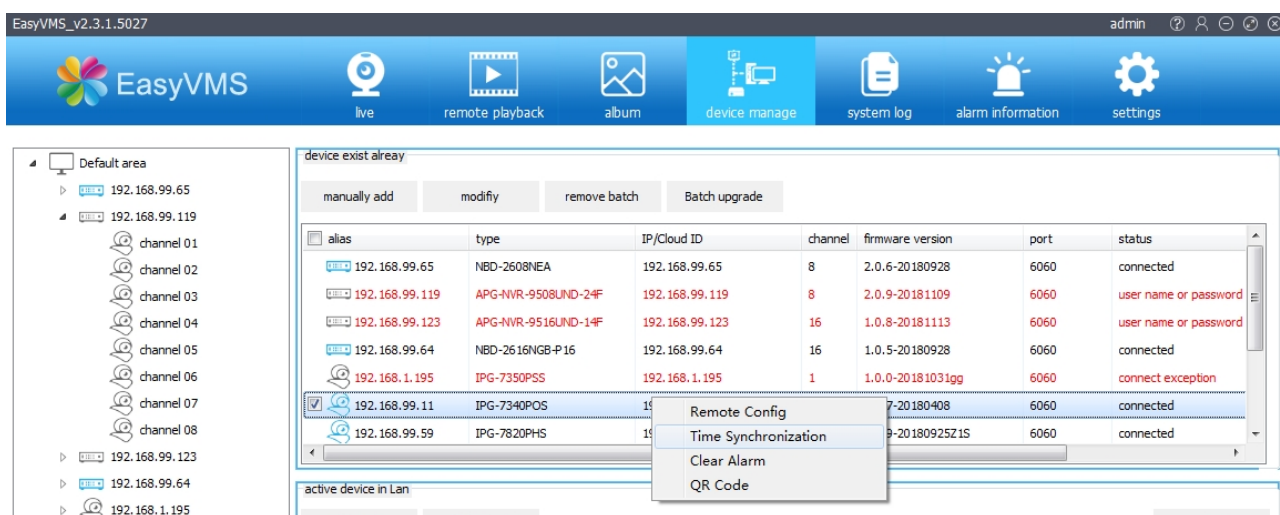


2.3.4 Device Control

Device control have function include: Time synchronization, device restart, clean alarm Etc

Time synchronization:

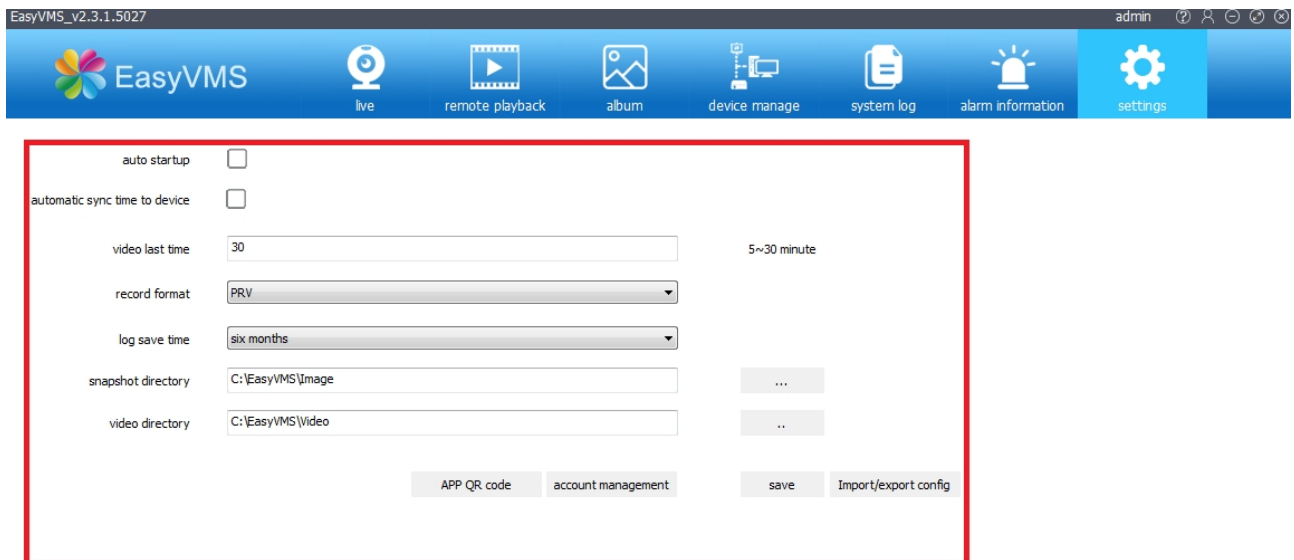
Device manage> added device, Choose the device, Press Time synchronization button, then the device and the pc will same time.



You also can choose “Remote config” and “Clear Alarm” at the same time.

2.3.1, System Configuration

Press “Settings” Login System Configuration



1, Support setting auto start running CMS EASYVMS, Choose **【auto startup】** button and save. Then it will auto running in next restart computer.

2, Support Setting auto Proofreading interval time, Choose **【automatic sync time to device】** button, input the time (like: 120), and save it, then it will proofreading interval time after 2hours

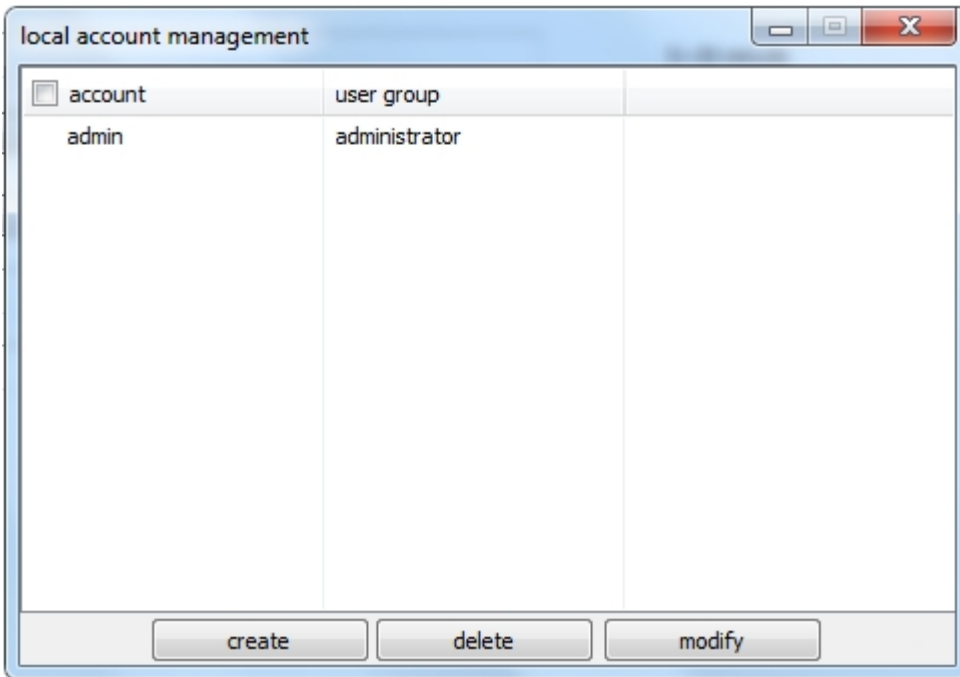
3, Support Setting duration of local recording, Choose the dialog box of the duration and input the number (like 30), then it will recording half hours one file.

4, you can setting save time of the log file.

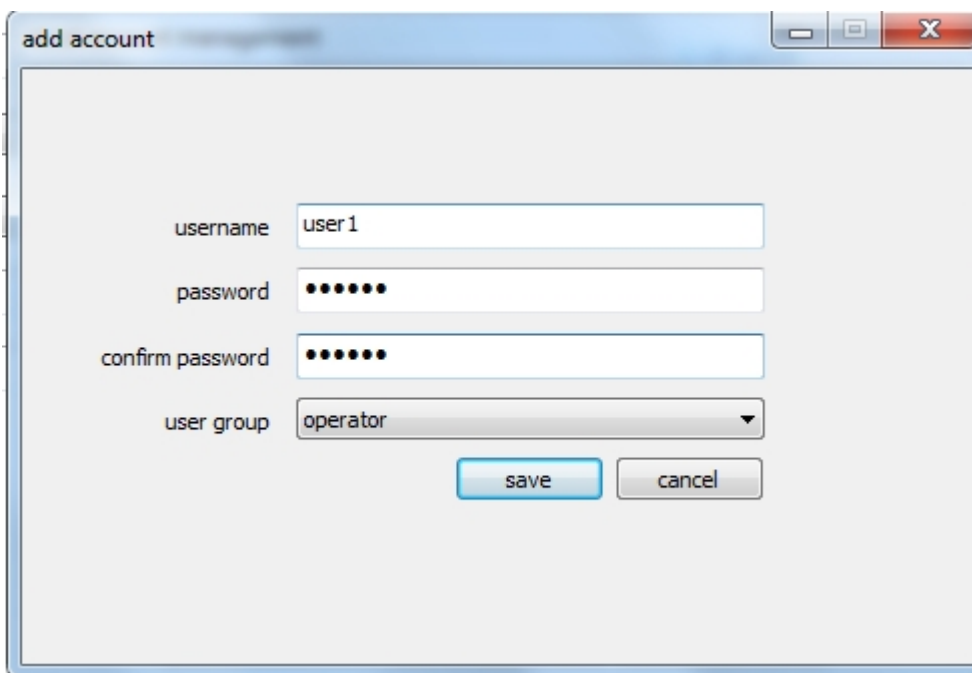
5, Setting the Snapshot and recording save path, Press **...** choose the path, like (G:\EASYVMS \Image/ G:\ EASYVMS \Video) . After save, the snapshot path is G:\ EASYVMS \Image, Recording path is G:\ EASYVMS \Video.

Account Management: Login to system setting, you can manage local account for operation, include Create Administrator, Create Guest, Change password, Delete device and more.

Press **【account management】** button, Press **【Create】**, input new user name, password, and user group.



After save the operation, the group will see a user1 in the list.



Press **【Account Management】** button, choose operation user name is user1, Press **【Delete】**, then the create user account will delete.

The authority have three level for user:

Administrator: Administrator authority can arrange device and user, live, playback, search log, change password, switching user, exit CMS.

Operator: Live video, playback recording, search Log, switching user, change password.

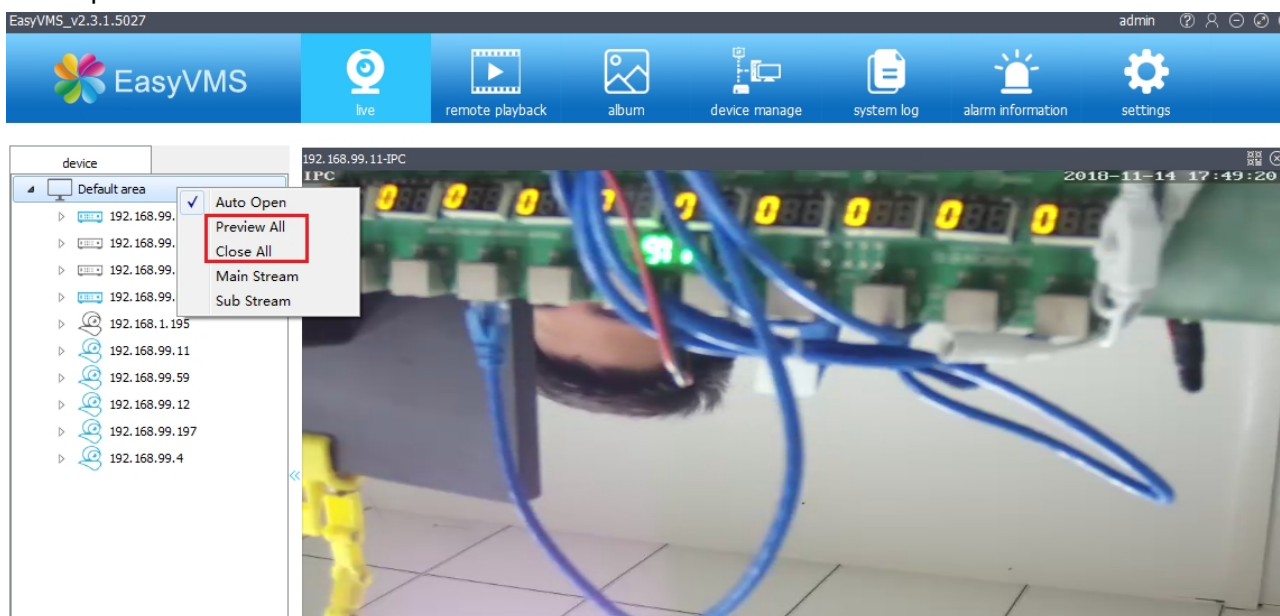
Guest user: Live video, switch user, change password.

2.5, Live Preview

2.5.1. Live Preview

Double Click Device name on left side, you can preview the device video on right side for screen.

Close the single preview, press right key of the device, you will see listing, press "Close live" for close the device preview.




on left side, press device right key, you can choose function Auto Open, Open by Area, Close by Area.


2.5.2. Preview Control


There have some function button on the preview.





Icon  is close full channels of preview.

Icon  is snapshot, capture picture to local to save.

Icon  is close full channels recording.

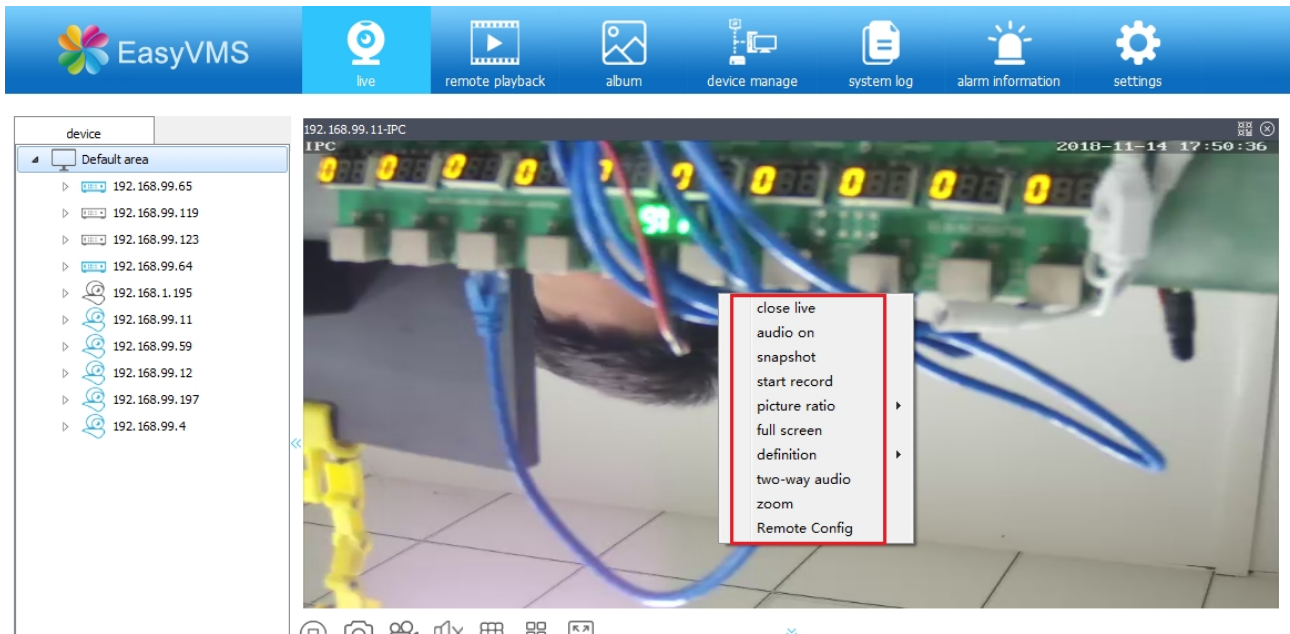
Icon  is close full channels audio.

Icon  is setting multiple video on screen, can setting single, 4/9/16/25/36/64 channel video for preview

Icon  is make video to full screen, press it make full screen, press ESC exit it.

2.5.3. Channel right key control menu

For the preview, choose a channel for right key, it show the menu.



Press **【close live】** Button, close the channel preview.

Press **【audio on】** Button, open the channel audio.

Press **【snapshot】** Button, snapshot picture of the channel save to local.

Press **【start record】** Button, recording video of the channel save to local.

Press **【picture ratio】** Button, setting preview video size.

Press **【full screen】** Button, make the preview video of the channel to full screen.

Press **【definition】** Button, setting the channel video quality (main stream/ sub stream, only use for p2p)

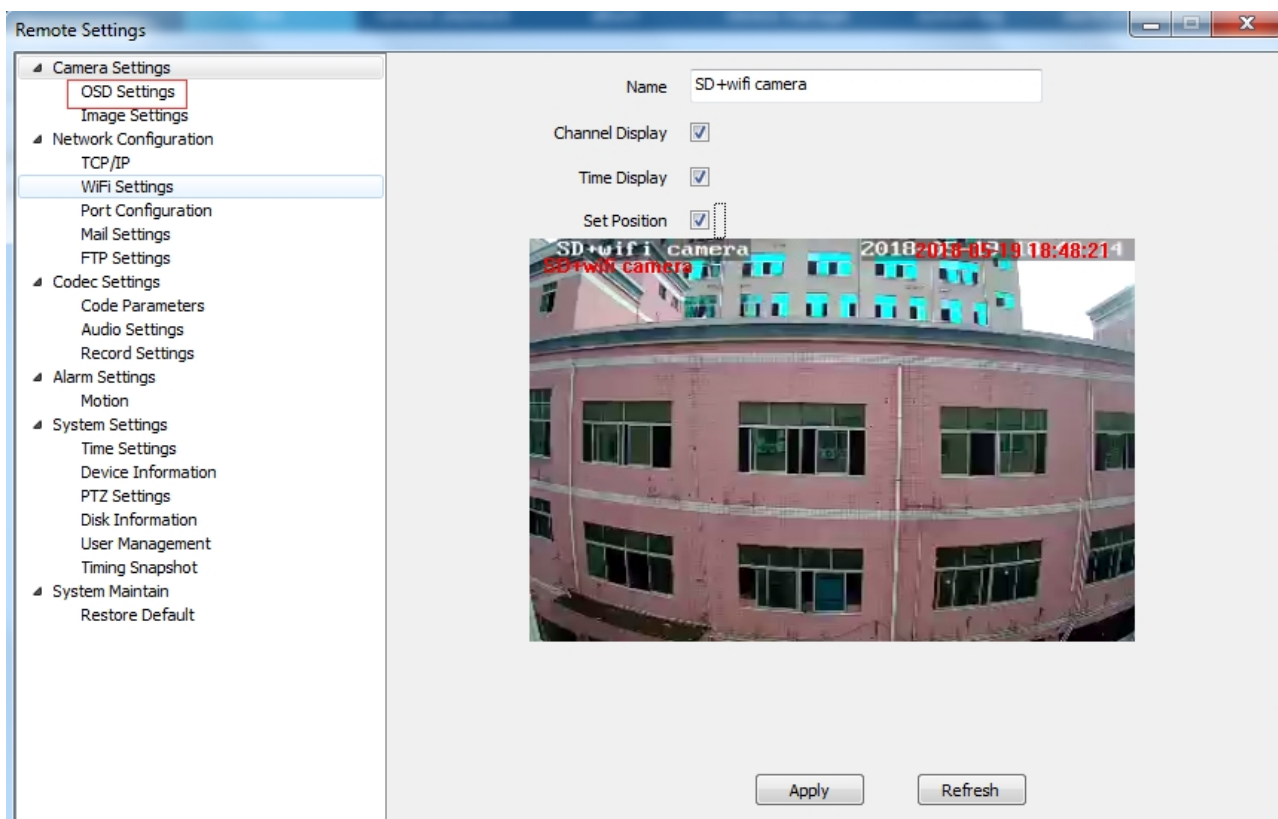
Press **【zoom】** Button, digital zoom for this channel.

Press **【Remote config】** ,Configure remote camera parameters.

2.5.4, Remote Config

2.5.4.1, Camera settings

A, Channel Name, edit the channel name and Channel Display, Time display, Set position



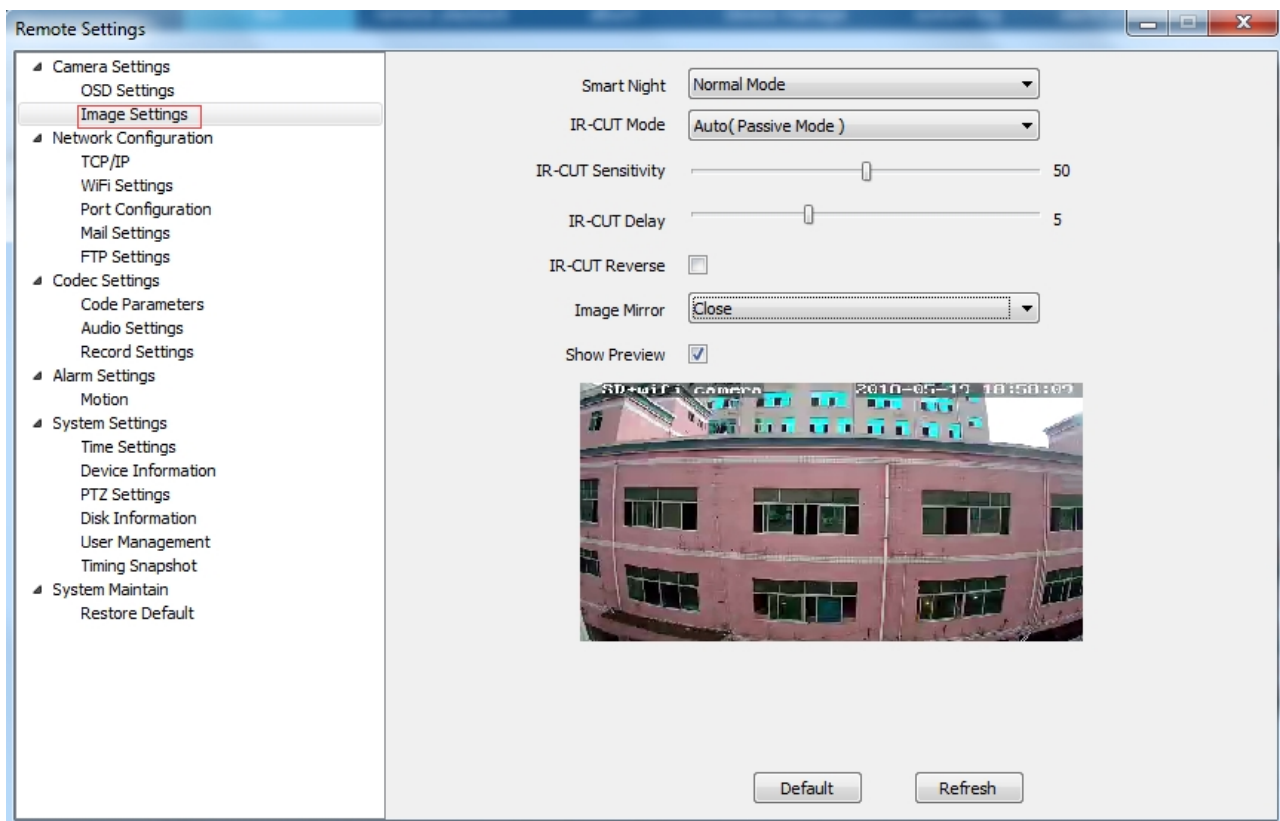
B, Setting parameter of camera video.

Smart Night: Normal Mode.

IR-CUT mode: auto (Passive mode), Day/Night, Auto (Active mode)

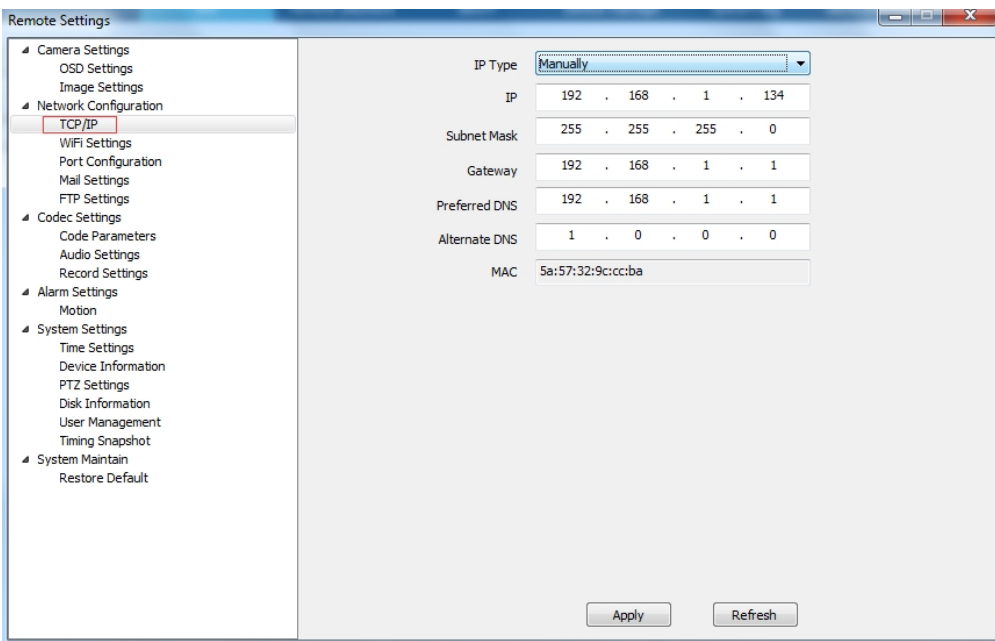
IR-CUT Sensitivity: 0-50(The higher the number, the higher the sensitivity.)

Image Mirror: close, Flip horizontal ,FlipVertical, Flip Center

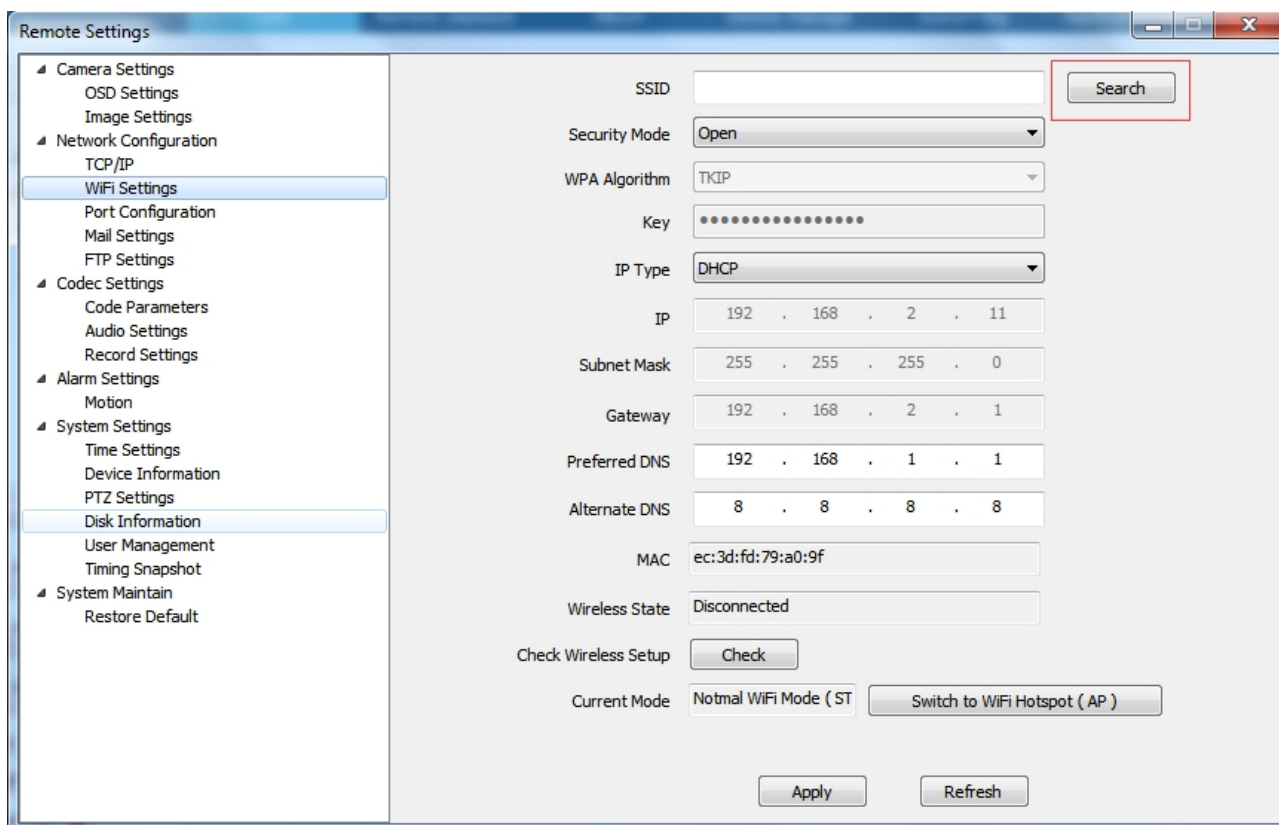


2.5.4.2, Network configuration

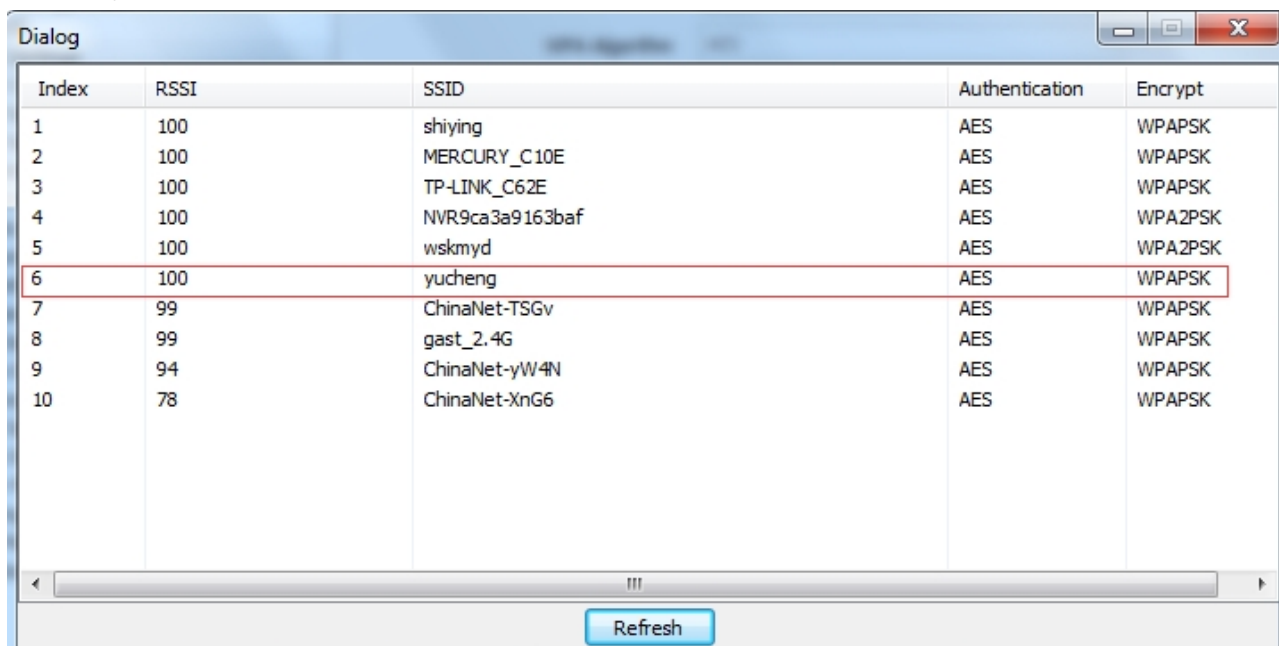
A, TCP/IP Settings: You can choose the IP address type, manually and DHCP mode, and Modify the IP address parameters.



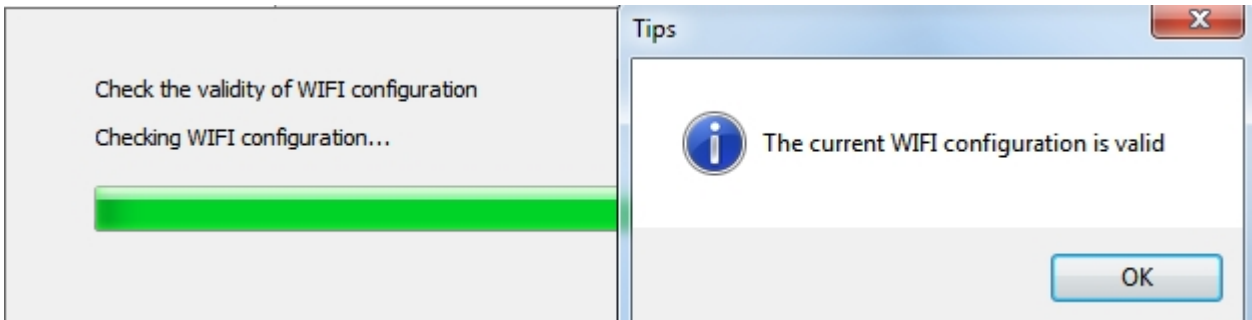
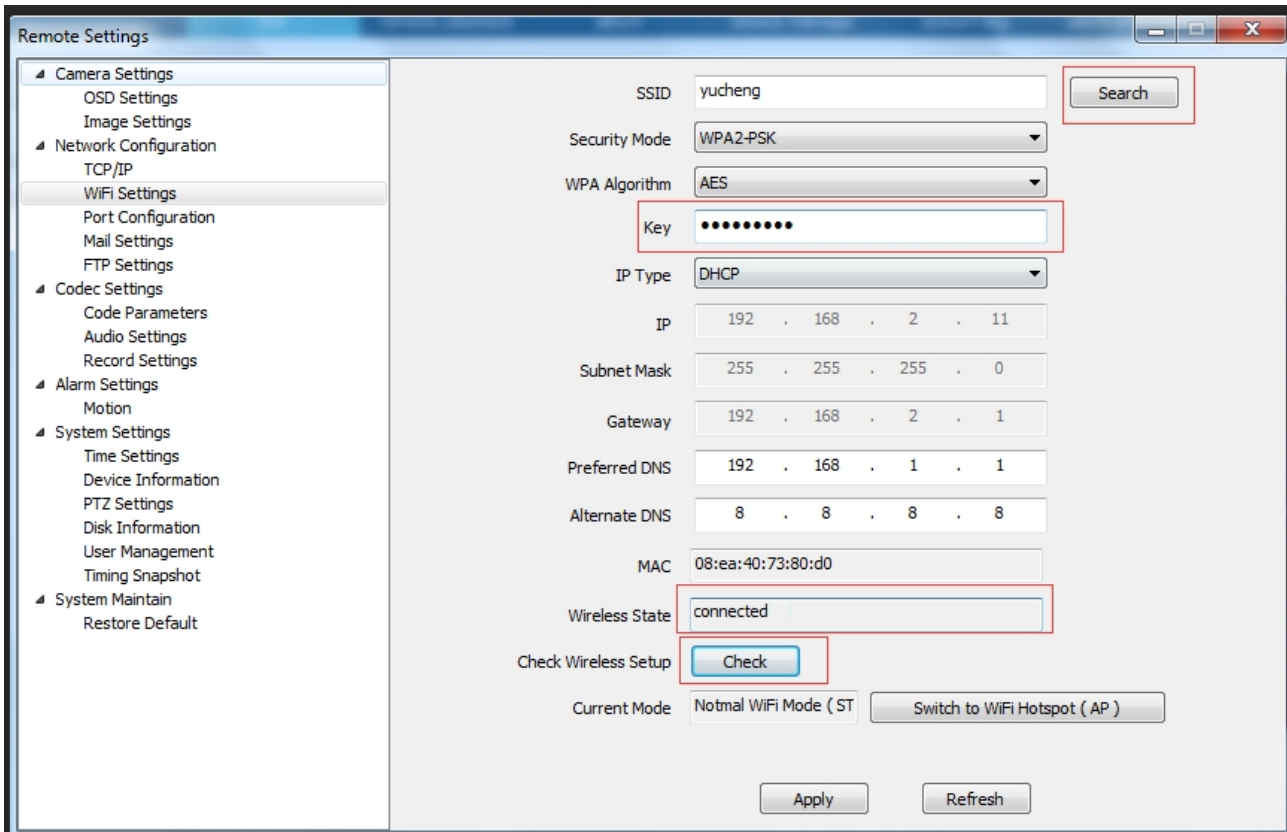
B, WIFI settings: If you use the camera for the first time, and your camera connect to your router through Ethernet cable, please Click “Search” for add your WIFI setting



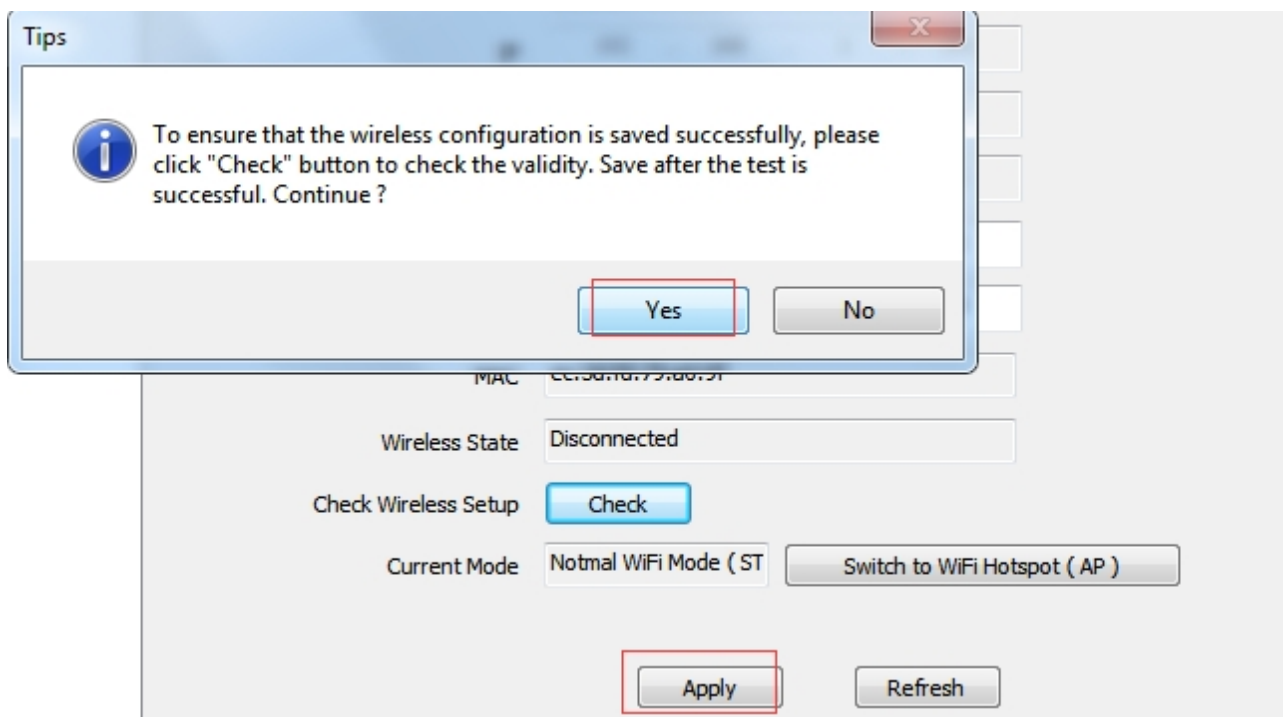
Choose your wireless router WIFI SSID



Input KEY and Check, system will auto check the Wi-Fi details, if successful, please click the app, connect to WIFI.

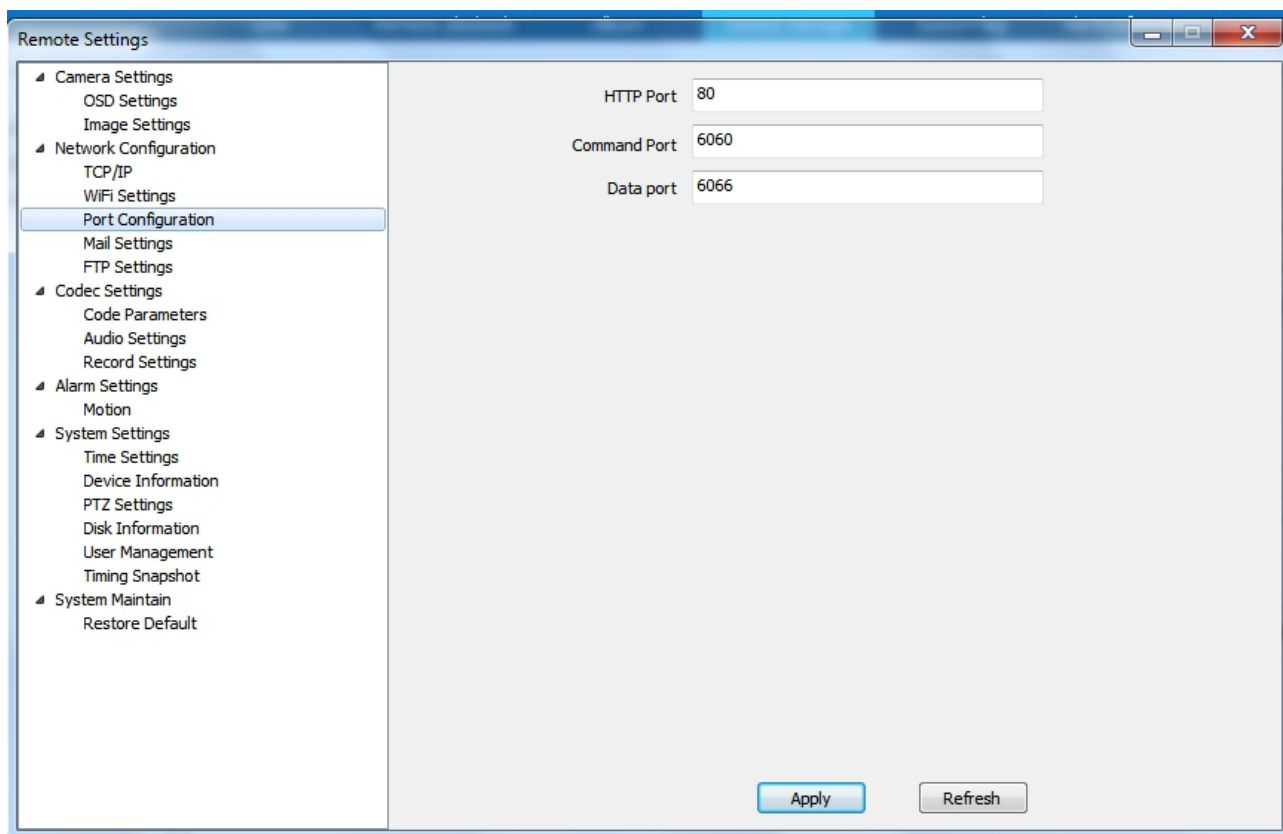


Setting WIFI successful, Now you can disconnect wired Ethernet cable. And click “apply”

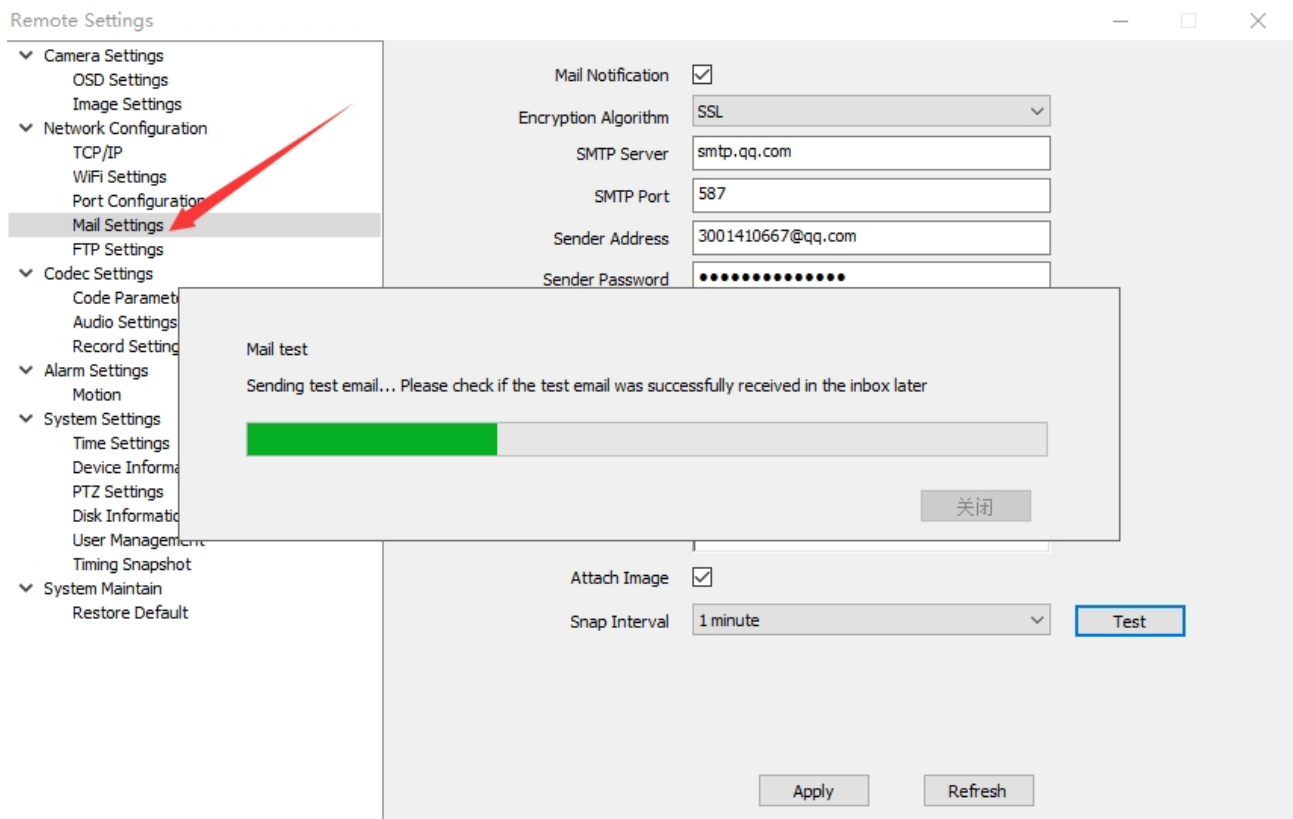


Then Research your camera, at which point you search and add a camera for WIFI connections
 Port Configuration:

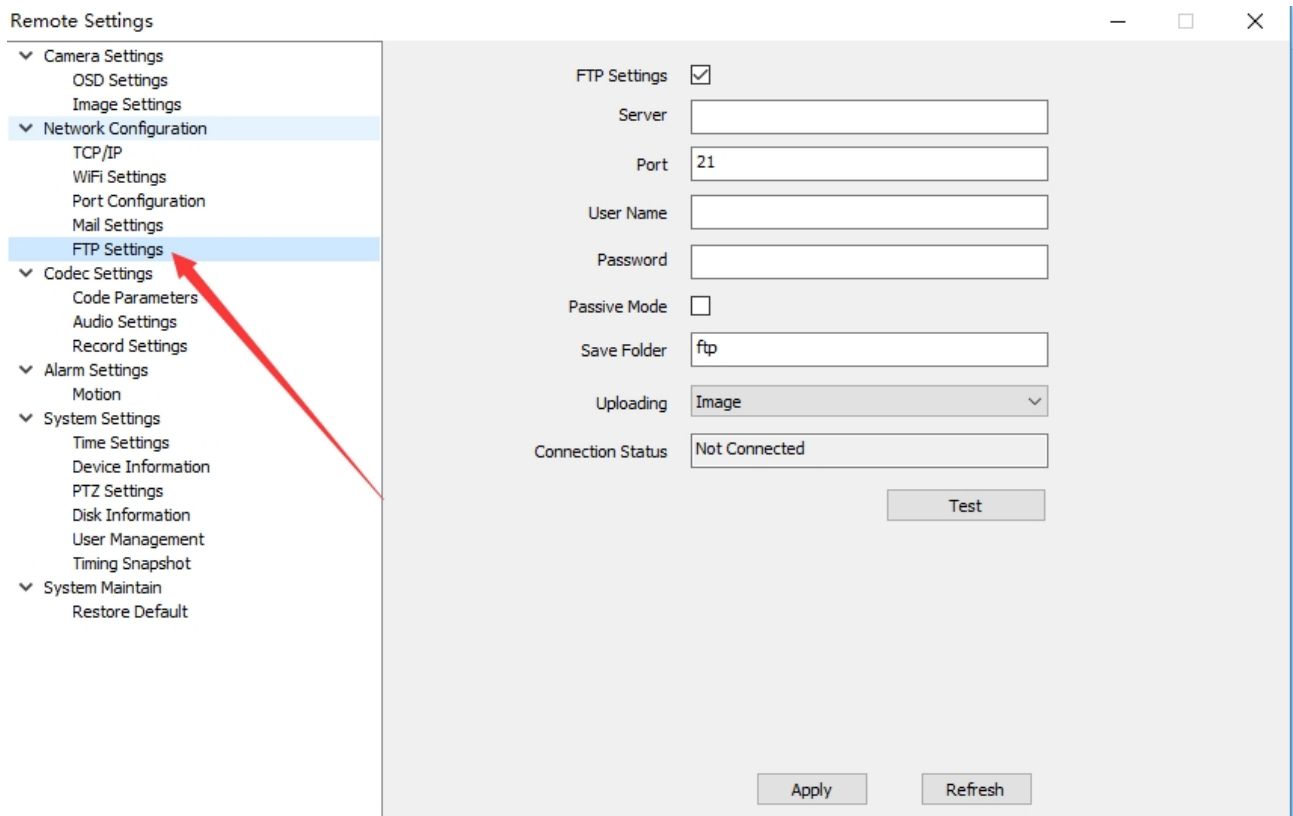
C,Port Setting, HTTP/ After the signaling/data port is modified in the corresponding access software, it is necessary to manually add the modified port number, otherwise it cannot be accessed effectively (non-professionals do not recommend modifying it to avoid adding devices)



D, Email Setting: Enable and configure.



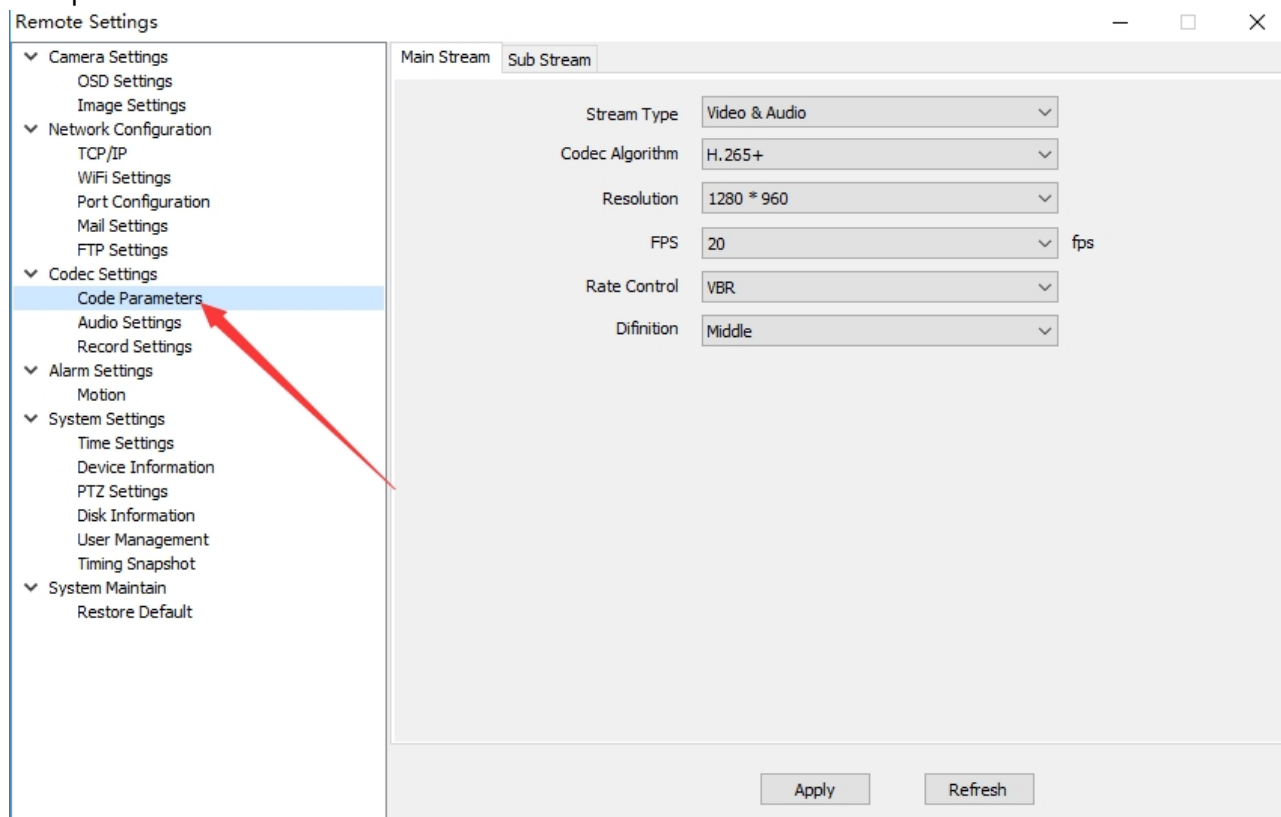
E,FTP Setting:



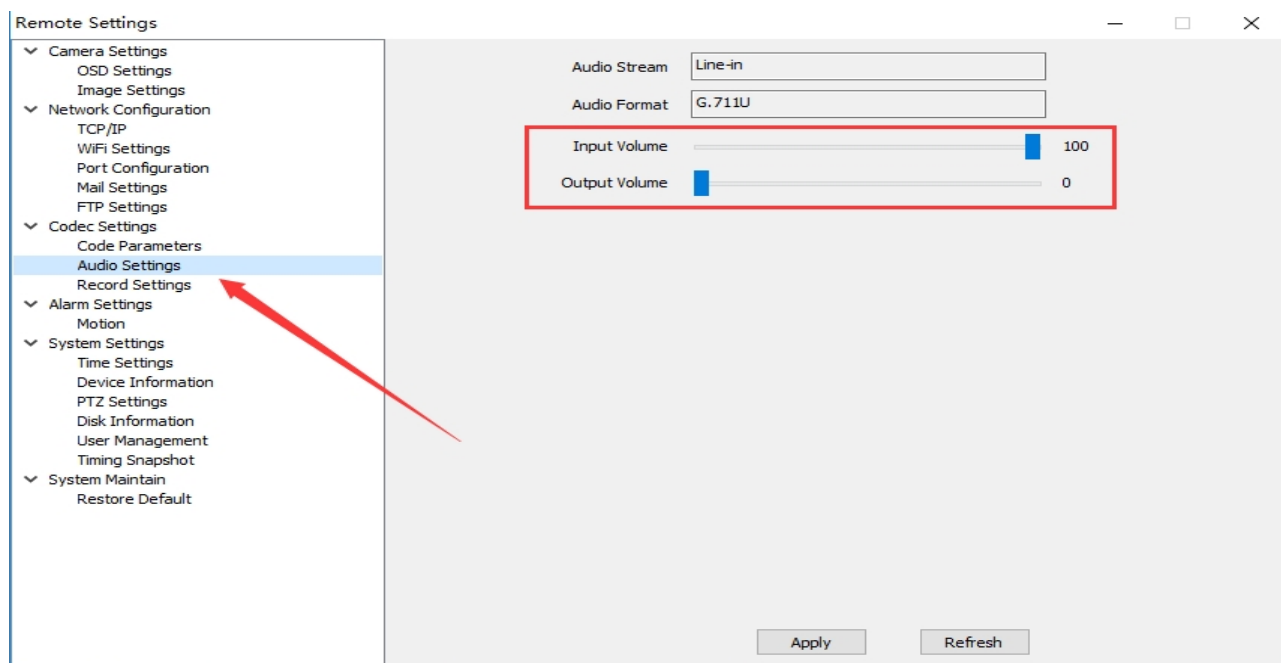
2.5.4.3, Encod settings:

A, Code Parameters

Coding parameters: Modify the format of the video screen and the appropriate parameters, has reached the optimal effect

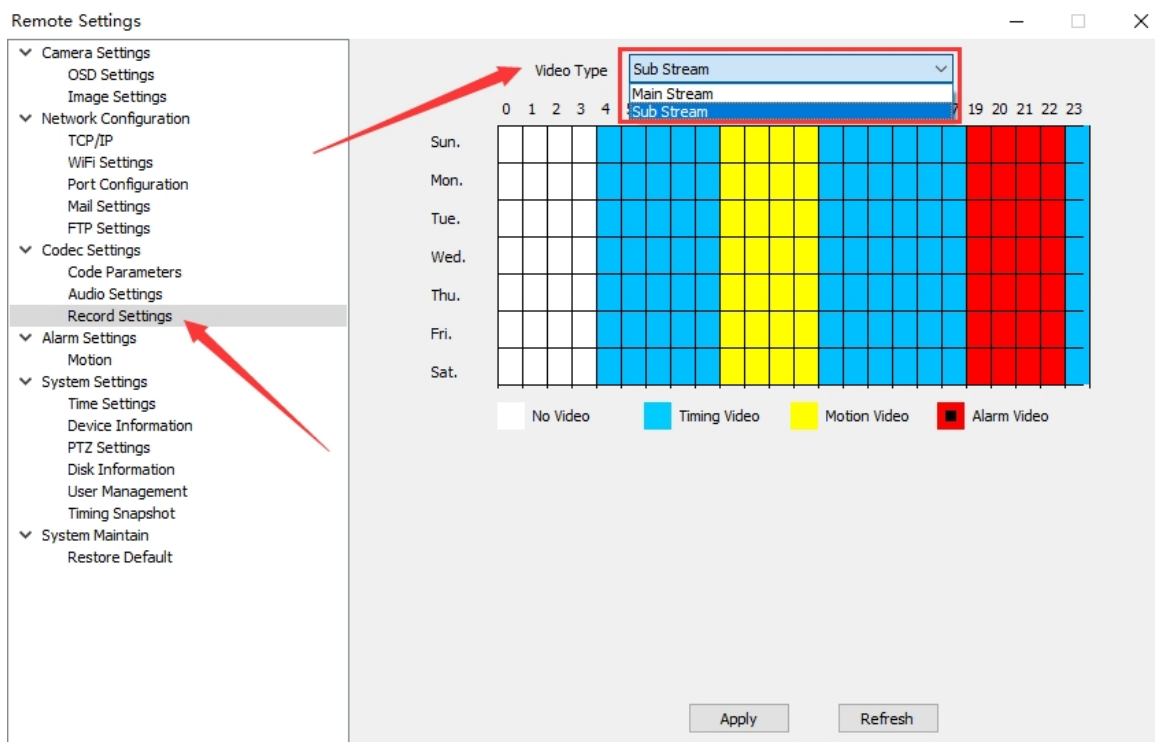


B, Audio setting: The input volume refers to the size of the camera's microphone recording. The greater the value, the louder the playback sound of the monitoring device; the output volume refers to the sound played by the camera speaker. The greater the value, the louder the camera will play.



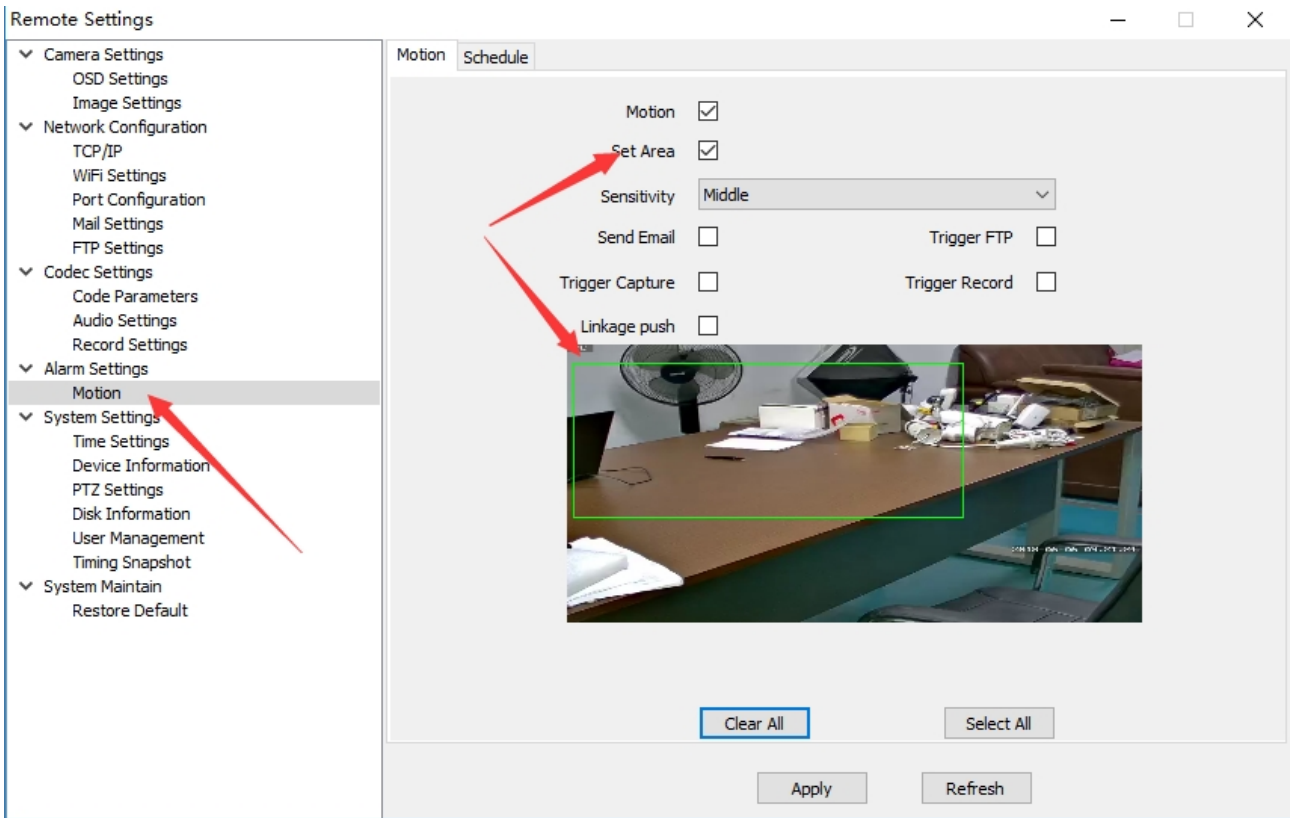
C, Recording plan; 1. The main stream (HD) and sub-stream (clear) are optional for recording. HD

recording is the highest resolution recording of the device. At this time, the SD card's recording file and the used memory capacity will become larger. Clear is the default option. 2. The recording mode will be different colors. The timing record is blue. It can be understood as the set time period recording (default is all day timer recording); the alarm recording is red, indicating that the R485 and switch alarms have detected the signal. After the start of recording (this function is dependent on the product); moving recording is yellow, it means that when the object is detected to start recording, you need to enable motion detection in advance; disable the recording to be white, indicating that the current time is not recorded.



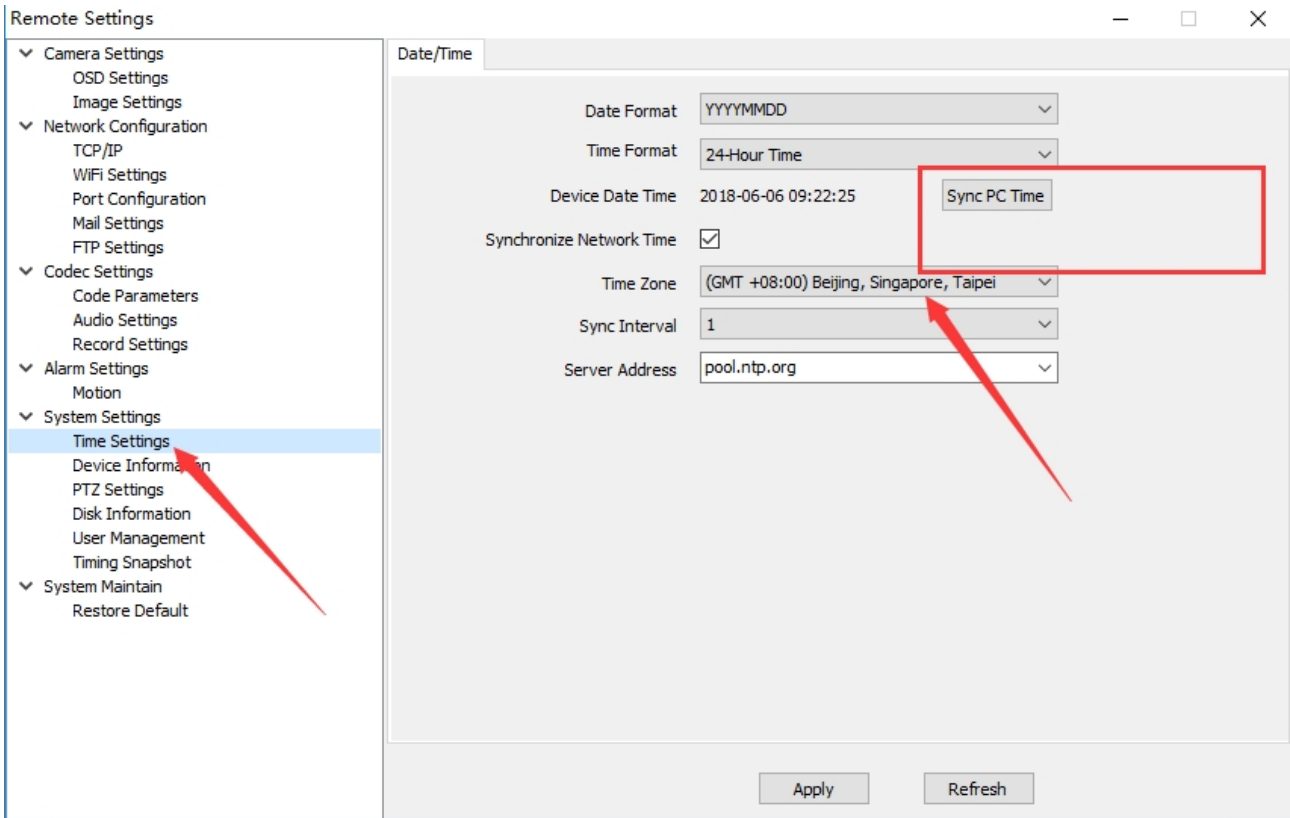
2.5.4.4, Alarm Setting

1, motion detection; refers to open or close the motion detection, motion detection alarm trigger method (take a picture when the alarm, by email to the specified mailbox, you must first set up a good mailbox); trigger FTP (Capture a picture during the alarm, send the picture to the FTP terminal via the FTP server; push the button (refer to whether to receive the camera alarm reminder, the home page subscription function needs to enable the linkage push); trigger capture (in the detected When the signal is moved, a picture will be snapped. The captured picture can be viewed on the message function of the home page; triggering the recording (the video will be recorded in different colors after the movement signal is detected); selecting the area (referring to the selected area on the screen The mobile signal will alarm, the selected area is based on the green box.)

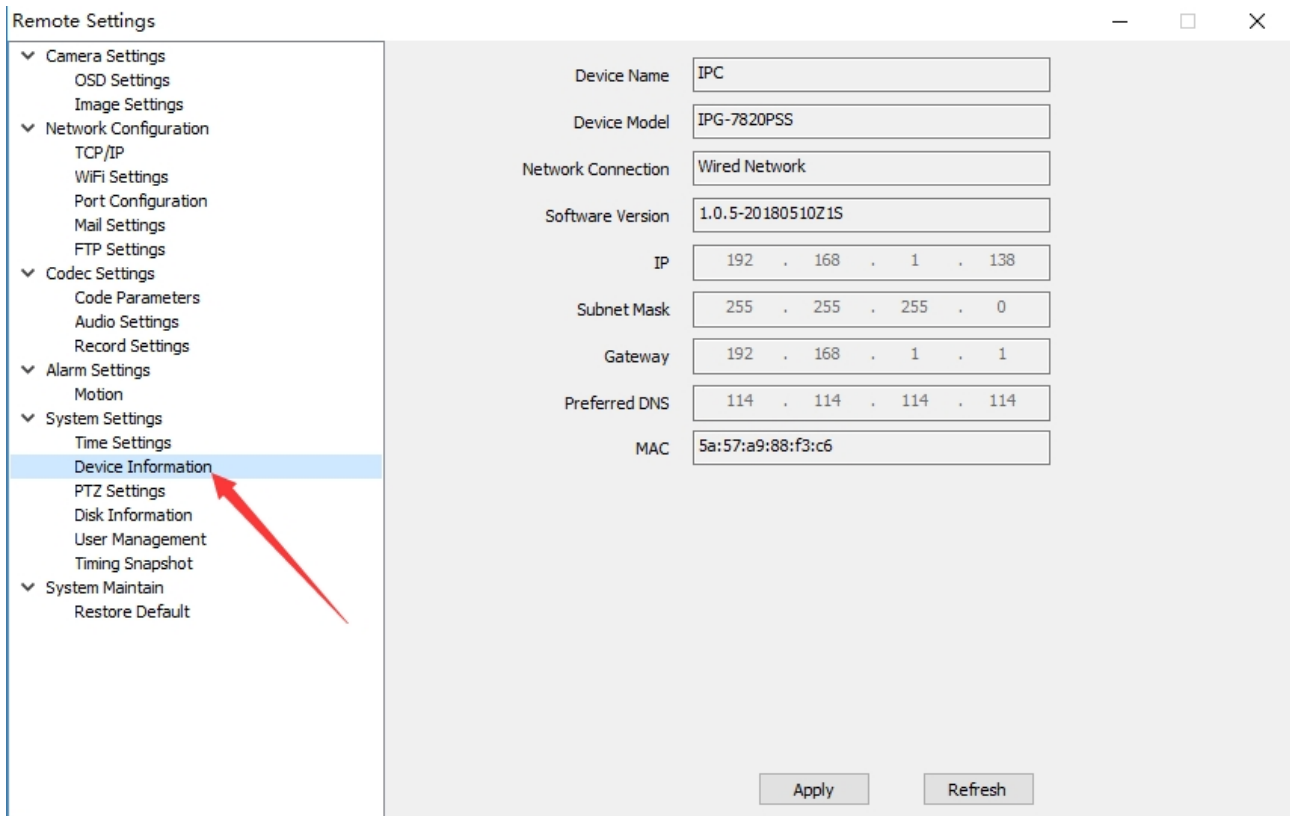


2.5.4.5 System Setting

1, Time setting: According to your local time setting the camera time.



2, Device information: display the device model no., network connect type, software version and IP address.



Remote Settings

- Camera Settings
 - OSD Settings
 - Image Settings
- Network Configuration
 - TCP/IP
 - WiFi Settings
 - Port Configuration
 - Mail Settings
 - FTP Settings
- Codec Settings
 - Code Parameters
 - Audio Settings
 - Record Settings
- Alarm Settings
 - Motion
- System Settings
 - Time Settings
 - Device Information**
 - PTZ Settings
 - Disk Information
 - User Management
 - Timing Snapshot
- System Maintain
 - Restore Default

Device Name: IPC

Device Model: IPG-7820PSS

Network Connection: Wired Network

Software Version: 1.0.5-20180510Z1S

IP: 192 . 168 . 1 . 138

Subnet Mask: 255 . 255 . 255 . 0

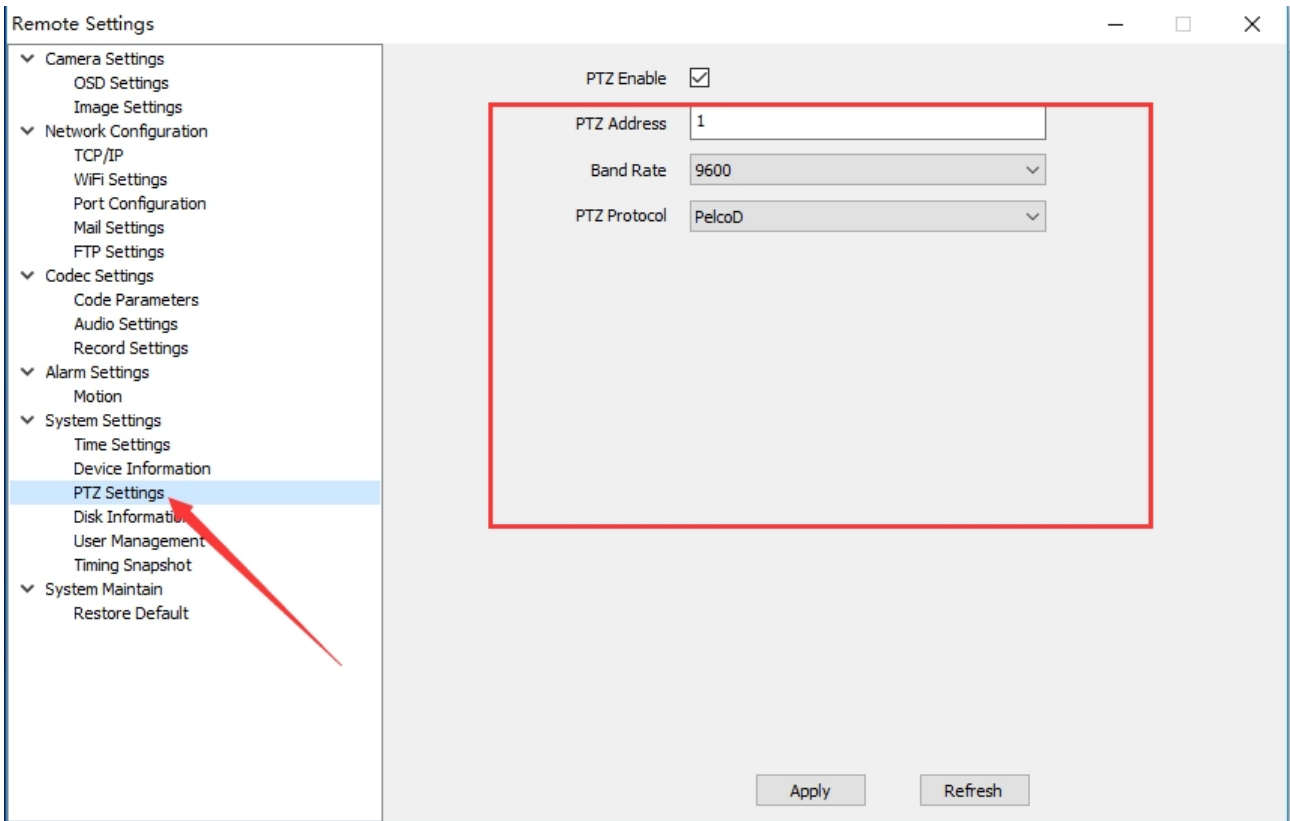
Gateway: 192 . 168 . 1 . 1

Preferred DNS: 114 . 114 . 114 . 114

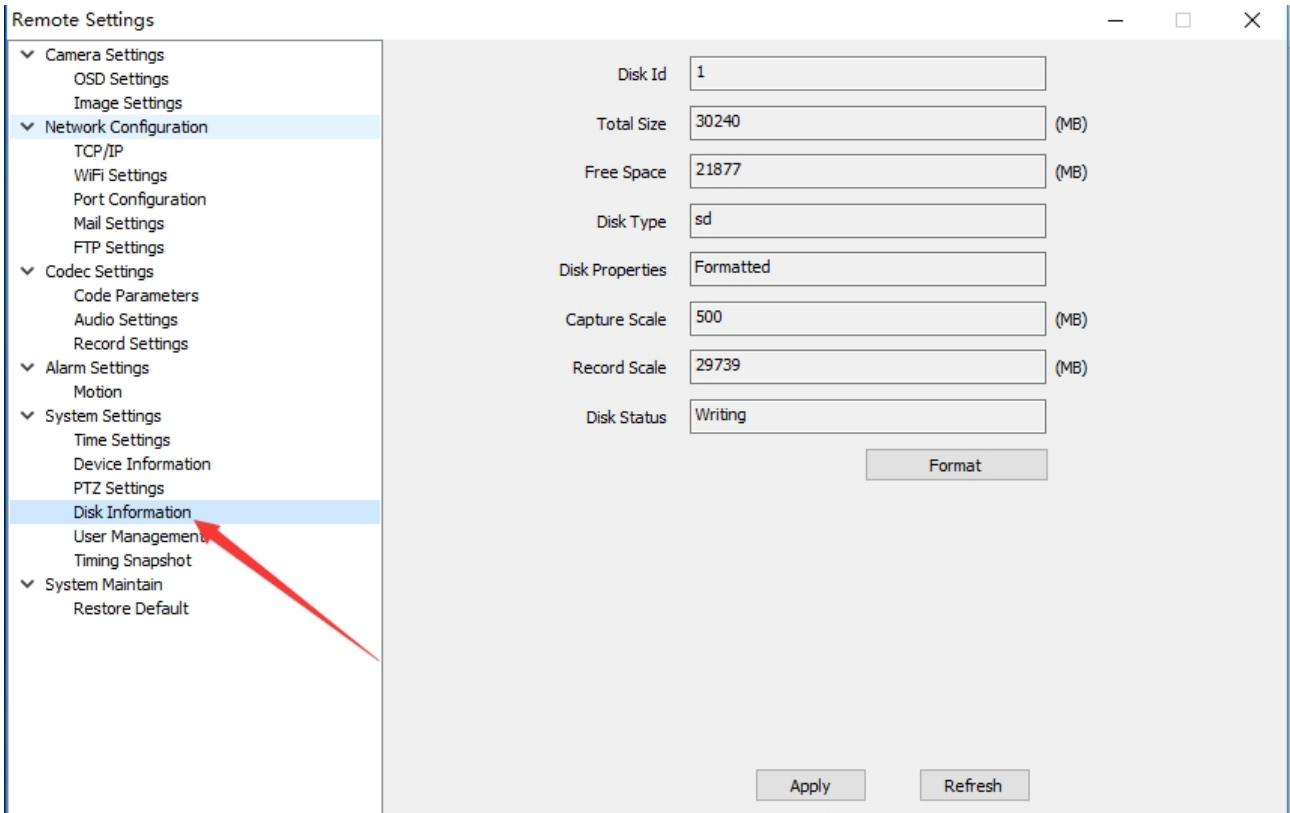
MAC: 5a:57:a9:88:f3:c6

Apply Refresh

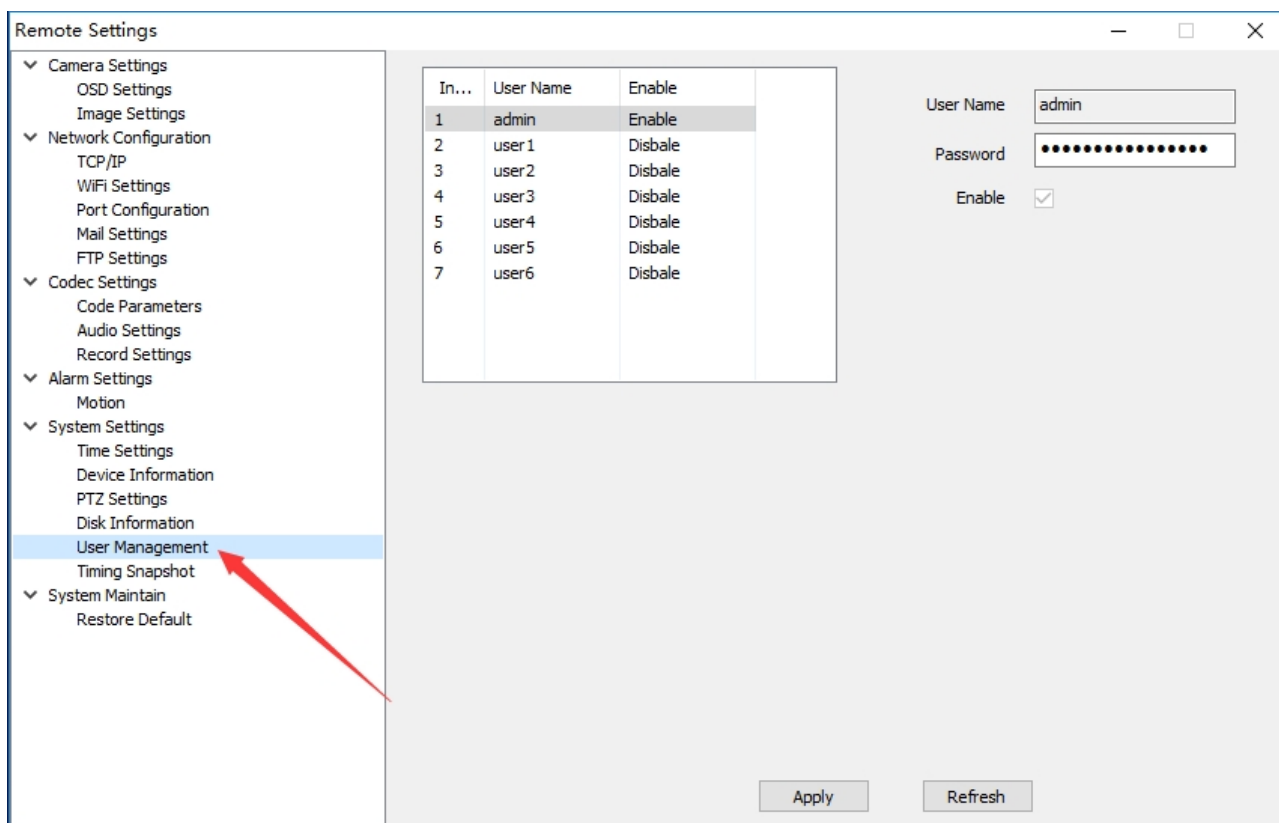
3, PTZ Setting: PTZ control setting (camera up and down, left and right)



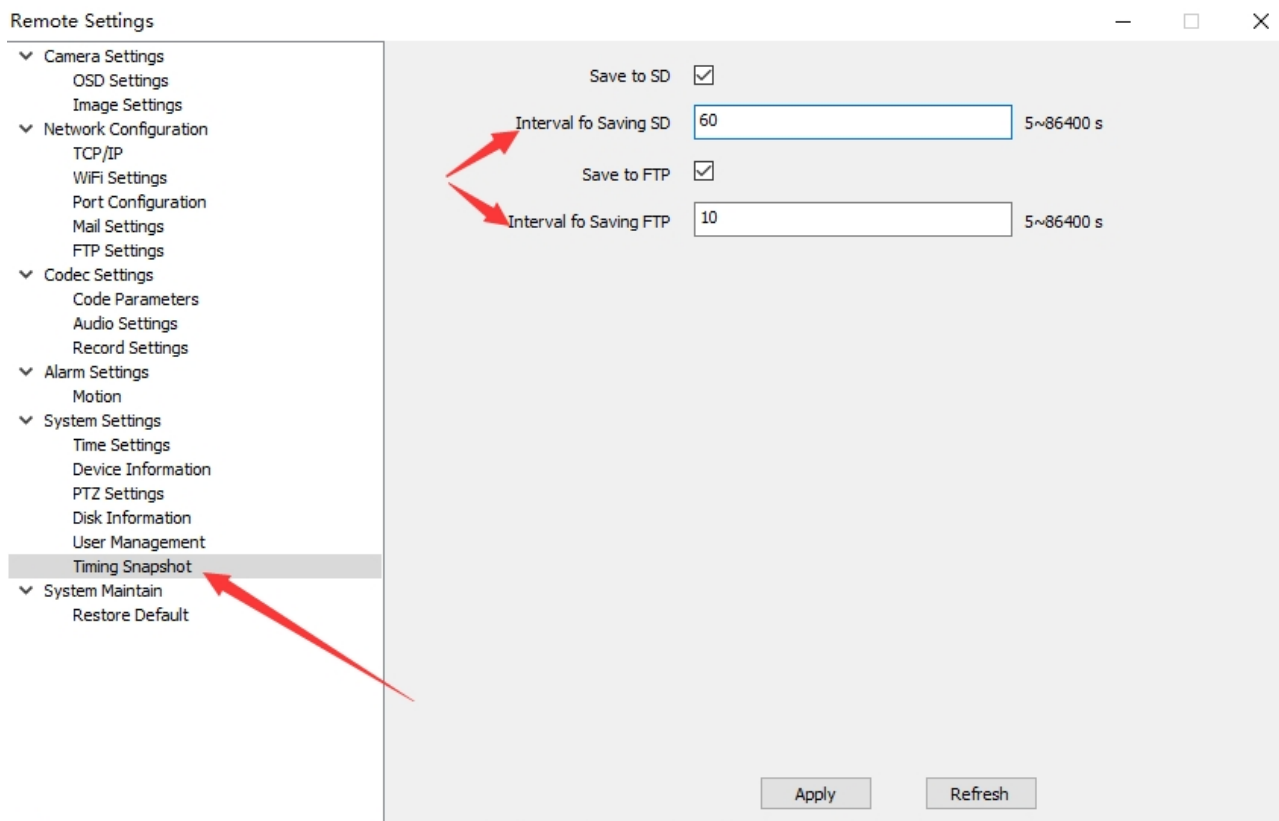
4, Disk information: display SD card memory, write status and snapshot, recording for memory size.



5, User Management: Setting user authority



6, Timing Snapshot: Setting where save the snapshot picture (now only support SD card and APP)



2.5.4.6, System Maintenance

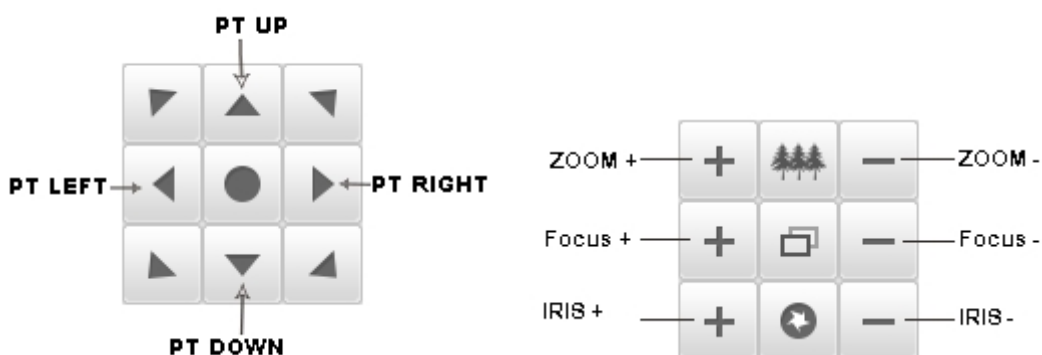
1. Restore the default; restore the default (all camera settings restored to the factory state, but will not delete the user data); restore the factory (camera fully initialized, including settings and user data will be deleted)

2.6.1, PTZ control

Click on the preview interface> below the device area bar> PTZ to enter the PTZ control interface

step

Adjust rotation speed 1: slowest,10: fastest.



assistance ON,OFF

preset SET,CALL

cruise set,run ,stop

track record,start,stop

2.6.2. Remote playback (Only support SD card camera and NVR)

2.6.2.1,RemoteplaybackI


Enter the remote playback interface. In the left device tree, select the channel to be played back (Note: currently only supports one playback at a time), select the date on the calendar, click the “Search” button, and the system starts on the DVR (or local Hard disk) Search for video and display search results in search results panel


Playback

Control:




Control Button


(1)  Player button, press it can continue play the recording.

 Pause Button, press it can pause the play the recording

 Stop play Button.

 Audio control button, turn on/off when it playing video

Choose  Fast forward  Slow forward..

(2) Press  button, playback snapshot, snapshot for playback video.

Timeline operation

- (1) The scale on the time axis is 0-24 points.
- (2) Mouse over the timeline to zoom in and out of the timeline.
- (3) Double-click the timeline to play it directly. 2.2.6.

Log management

Users can easily query the system log. The operation log records information about each key operation in the system, including the user, operation content, time, and user's IP address.

2.6.3. E-albums

The albums function is manage the picture and video for local, also you can view and delete for

recording.



Search by Device, Choose a device, it will search all picture and video for the device.

Search by date, Choose the date, it will search all picture and video for the date

Search by media type: Choose the media type, it will search all you choose type file.

2.2.8. Alarm Information

The alarm interface were recording all type of the alarm information, it include motion detection, video lost, alarm input, "Loss of heartbeat", . User can search and backup the alarm information.

2.2.8.1 Search Alarm Information

Check the type of alarm information (for example, check only the video loss, alarm input) to view the alarm information of all categories

2.6.4, System Log

Login the system Log interface, choose the Client Log, Chose the beginning and end time for search, then you can see user name, IP address, time, description for device.

index	time	account	device	description	channel
1	2018-05-19 18:37:25	admin		user login	
2	2018-05-19 18:36:08	admin	192.168.1.134	open live	1
3	2018-05-19 18:36:07	admin	192.168.1.134	open live	1
4	2018-05-19 18:36:04	admin	192.168.1.134	add device	
5	2018-05-19 18:35:58	admin	192.168.1.134	close live	1
6	2018-05-19 18:35:58	admin	192.168.1.134	delete device	
7	2018-05-19 18:34:15	admin	192.168.1.134	open live	1
8	2018-05-19 18:34:14	admin	192.168.1.134	open live	1
9	2018-05-19 18:33:58	admin	192.168.1.134	add device	
10	2018-05-19 17:46:33	admin	192.168.1.133	capture	1
11	2018-05-19 17:46:32	admin	192.168.1.133	capture	1
12	2018-05-19 17:46:28	admin	192.168.1.133	capture	1
13	2018-05-19 17:33:21	admin	192.168.1.133	open live	1
14	2018-05-19 17:33:21	admin	192.168.1.133	open live	1
15	2018-05-19 17:31:21	admin	192.168.1.133	add device	
16	2018-05-19 17:08:59	admin	192.168.1.132	delete device	
17	2018-05-19 17:08:59	admin	192.168.1.131	delete device	
18	2018-05-19 17:08:49	admin		user login	
19	2018-05-19 12:18:49	admin	192.168.1.132	open live	1
20	2018-05-19 12:18:48	admin	192.168.1.132	open live	1
21	2018-05-19 12:18:42	admin	192.168.1.131	open live	1
22	2018-05-19 12:18:35	admin	192.168.1.132	add device	
23	2018-05-19 12:18:35	admin	192.168.1.131	add device	
24	2018-05-19 12:18:01	admin		user login	

Press **【export】** Button, you can save the video to .csv video file.

2.6.5, Output alarm information

Press **【export】** Button, Choose the save path, then it will output alarm information to local

The interface features a blue header bar with the EasyVMS logo and navigation icons for live, remote playback, album, device manage, system log, alarm information (highlighted), and settings. Below the header, there are filter checkboxes for motion, video loss, alarm input, and Equipment offline, along with clear and export buttons. The main area displays a table of motion events.

index	source	time	event
1	192.168.1.133	2018-05-19 18:37:25	motion, channel: 1
2	192.168.1.133	2018-05-19 18:37:28	motion, channel: 1
3	192.168.1.133	2018-05-19 18:37:41	motion, channel: 1
4	192.168.1.133	2018-05-19 18:37:43	motion, channel: 1
5	192.168.1.133	2018-05-19 18:37:46	motion, channel: 1
6	192.168.1.133	2018-05-19 18:38:59	motion, channel: 1
7	192.168.1.133	2018-05-19 18:39:02	motion, channel: 1
8	192.168.1.133	2018-05-19 18:39:03	motion, channel: 1
9	192.168.1.133	2018-05-19 18:39:06	motion, channel: 1
10	192.168.1.133	2018-05-19 18:39:07	motion, channel: 1
11	192.168.1.133	2018-05-19 18:39:11	motion, channel: 1
12	192.168.1.133	2018-05-19 18:39:37	motion, channel: 1
13	192.168.1.133	2018-05-19 18:39:38	motion, channel: 1
14	192.168.1.133	2018-05-19 18:39:41	motion, channel: 1
15	192.168.1.133	2018-05-19 18:40:38	motion, channel: 1
16	192.168.1.133	2018-05-19 18:40:39	motion, channel: 1
17	192.168.1.133	2018-05-19 18:40:40	motion, channel: 1
18	192.168.1.133	2018-05-19 18:40:43	motion, channel: 1
19	192.168.1.133	2018-05-19 18:40:56	motion, channel: 1
20	192.168.1.133	2018-05-19 18:40:59	motion, channel: 1
21	192.168.1.133	2018-05-19 18:41:10	motion, channel: 1
22	192.168.1.133	2018-05-19 18:41:13	motion, channel: 1
23	192.168.1.133	2018-05-19 18:41:14	motion, channel: 1
24	192.168.1.133	2018-05-19 18:41:15	motion, channel: 1
25	192.168.1.133	2018-05-19 18:41:18	motion, channel: 1
26	192.168.1.133	2018-05-19 18:41:31	motion, channel: 1
27	192.168.1.133	2018-05-19 18:41:32	motion, channel: 1
28	192.168.1.133	2018-05-19 18:41:33	motion, channel: 1
29	192.168.1.133	2018-05-19 18:41:34	motion, channel: 1
30	192.168.1.133	2018-05-19 18:41:36	motion, channel: 1
31	192.168.1.133	2018-05-19 18:41:39	motion, channel: 1

END